

VIEW500

FASTEST STANDARD OTDR

- SOLA, Simplify The OTDR Test Process
- 7" Touch Screen with Smart GUI
- 8GB Internal Storage with Internal SD Card & External USB Memory
- Built-In VFL, Light Source and OPM
- Fast Booting Time
- Ultra-High Capacity Battery



BELIEVE
YOUR
EYES.

DESCRIPTION

The VIEW500 OTDR is used in the installation and maintenance of fiber optic cables. Features of the VIEW500 OTDR include high precision test capabilities, fast response times, and easy to learn operation. The multi-point capacitive touch screen allows for user-friendly operation. The VIEW500 offers accurate and fast test results and creates a report automatically. The VIEW500 is equipped with an industrial grade CPU for creating and storing test results.

CHARACTERISTICS



Fast Booting Time

DC USB Optical Connector VFL OPM



Simplify the Test Process



Measure Fiber Optical Link



Measure Optical Power & Loss



7" Touch Screen with Smart GUI
High Brightness
Resolution of 800x480



Identify Fiber Fault Location

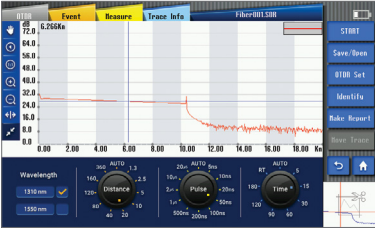


Magnify the Fiber End Face



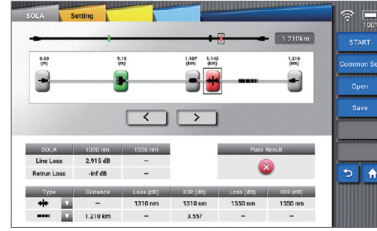
touch

OTDR



OTDR mode allows for measuring distance, loss, reflectivity, attenuation and accumulation loss on a fiber optical link.

SOLA



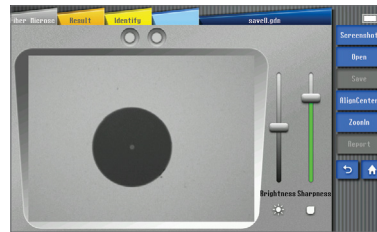
SOLA is an application for the OTDR, designed to simplify OTDR test process without the need to configure the parameters or analysis while parsing multiple complex OTDR curves.

VFL



VFL allows for finding direct fault locations in fiber test dead zones or performing fiber core calibration in multi-fiber cables.

FIBER MICROSCOPE



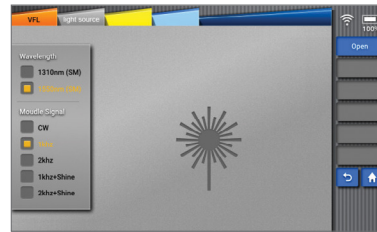
Fiber end tester (peripheral required) is mainly used to test the cleanliness and flatness of the fiber end face.

OPM



OPM is used for measuring the absolute optical power meter or relative optical power loss through the span of the optical fiber.

LIGHT SOURCE



Invisible light source (1310 or 1550nm) can provide the following types of light, including CW light, 1kHz light, 2kHz light, 1kHz blink light, 2kHz blink light.

ULTRA-HIGH CAPACITY BATTERY



VIEW500 offers the ultra-high battery capacity of 7800mAh.

TECHNICAL SPECIFICATIONS

Model	VIEW500
Display	7 inches, High Brightness TFT LCD, resolution of 800×480
Distance unit	m / km / mile
Dynamic range	35dB / 33dB (1310nm / 1550nm)
Measurement range (km)	1.3, 2.5, 5, 10, 20, 40, 80, 120, 160, 360km
Measurement range (mile)	0.81, 1.55, 3.11, 6.22, 12.4, 24.8, 49.6, 74.6, 99.4, 223.7mile
Pulse width	5ns, 10ns, 20ns, 50ns, 100ns, 200ns, 500ns, 1μs, 2μs, 10μs, 20μs
Event dead zone	0.8m
Attenuation dead zone	4m
PON dead zone	40m
Distance accuracy	±(1m+Distance×2.5×10 ⁻⁵ +Sampling resolution)
Loss scale linearity	±0.1dB or ±0.05dB / dB
Sampling points	160,000 points
Splitting ratio	Up to 1:64 splitter
Resolution	0.04m ~ 10.24m
Operating mode	Press keys and touch screen
Battery capacity	Operating Time : Up to 12H
File format	SOR(Telcordia), BMP, JPG
External connection	USB 2.0
Compatible connector	APC(FC, SC, LC), UPC(FC, SC, LC, ST)
Power supply	AC Input 100-240V, 50-60Hz / DC Input 19V, 3.42A
VFL Distance	Up to 15km
VFL module	Operating wavelength: 650nm ±10nm, Universal interface: 2.5mm
Light source	Operating wavelength: 1310nm / 1550 nm ±10nm
Optical power meter	Wavelength calibration: 850 / 1300 / 1310 / 1490 / 1550 / 1625nm
Measurement time (OPM)	-70 to +6dBm
Accuracy (OPM)	0.01dB
Unit display for OPM	dB, dBm, uW

PACKAGE

OTDR	VIEW500
Power Cable / AC Adapter	ACC-25 / JS-180300
Carrying Case / Key	✓
Shoulder Strap	✓
Touch Pen	✓

GENERAL SPECIFICATIONS

Dimension	7.08H x 10.70W x 2.44D inches (180H x 272W x 62D mm, excluding rubber bumper)
Weight	4.19pounds (1.90kg with battery)
Operating conditions	-10~50℃
Storage conditions	-20~60℃
Relative humidity	0~95% (Noncondensing)



* The information on this catalog is subject to change without prior notice.

ORDERING INFORMATION

XXX - XXX - XXX - XXX - XXX - XXX - XXX - XXX - XXX - XXX

Model

OTDR: VIEW500

Optical Configuration

SMF1: 1310/1550nm

Basic Software

OTDR: OTDR application only

SOLA: SOLA application only

OS: OTDR & SOLA application

Fiber Connector

CNT1: FC/APC CNT4: FC/UPC CNT7: ST/UPC

CNT2: SC/APC CNT5: SC/UPC

CNT3: LC/APC CNT6: LC/UPC

Power Meter

P0: without Power Meter

PM: with Power Meter

Power Meter Connector Adapter^{a)}

PMC1: FC(UPC and APC)

PMC2: SC(UPC and APC)

PMC3: ST/UPC

Light Source

LS0: No VFL, Light Source

LS1: with VFL

LS2: with Light Source

LS3: with VFL & Light Source

Micro Scope

MS0: without Micro Scope

MS1: with Micro Scope - V20

Patchcord Tips^{b)}

V20UPC25: Universal patchcord tip for 2.5mm ferrules (FC, SC, ST)

V20APC25: Universal patchcord tip for 2.5mm ferrules (FC, SC)

V20UPC125: Universal patchcord tip for 1.25mm ferrules (LC)

V20APC125: Universal patchcord tip for 1.25mm ferrules (LC)

Wi-Fi

WF0: without Wi-Fi

WF1: with Wi-Fi

Example: VIEW500-SMF1-OS-CNT2-PM-PMC1-LS3-MS1-V20UPC25-WF1

^{a)} If Power Meter selected.

^{b)} If Micro Scope selected.

EI CONNECTOR



To improve the testing efficiency and optimize the OTDR function, APC connector is recommended to be applied and connected with SM port of VIEW500, due to low reflectance caused by it. The reflection coefficient is the key parameter that will affect the OTDR performance and especially the dead zone. (The performance of the APC connector is better than that of the UPC connector).