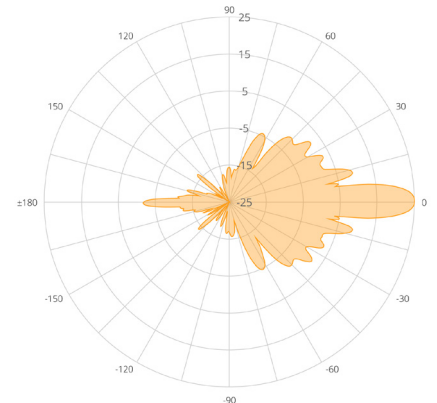
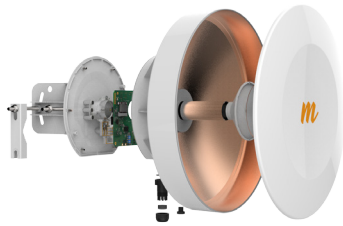




B5 Specifications



B5 Backhaul Polar Plot

Performance

Max Throughput	Up to 1.0 Gbps IP (1.7 Gbps PHY)
Low Latency	2+ ms
Wireless Protocols	TDMA

Radio

MIMO & Modulation	4x4:4 MIMO OFDM up to 256QAM
Bandwidth	Single or Dual 20/40/80 MHz channels
Frequency Range	5150-5850 MHz restricted by country of operation (*new* US/FCC 5600-5650 support)
Max Output Power	30 dBm (2-stream), 27 dBm (4-stream)
Sensitivity (MCS 0)	-87 dBm @ 80 MHz -90 dBm @ 40 MHz -93 dBm @ 20 MHz

Antenna

Gain	25 dBi
Beamwidth (3dB)	8° (Hpol and Vpol)
Elevation Adjust	± 20° mechanical adjust
Front-to-Back Ratio	>30 dB
Cross-Polar Isolation	>20 dB or better
Polarization	Dual-Linear (horizontal & vertical)

Power

Max Power Consumption	20W
System Power Method	802.3at compliant
System Lightning & ESD Protection	6 kV
PoE Power Supply	Passive POE compliant, 48-56 V Power over Ethernet supply with IEC61000-4-5 surge protection

Physical

Dimensions	Diameter: 442 mm (17.4") Depth: 362 mm (14.3") with bracket
Weight	4.9 kg (10.8 lbs) with bracket
Enclosure Characteristics	Single enclosure with radome Outdoor UV stabilized plastic Painted steel bracket plate
Wind Survivability	200 km/h (125 mph)
Wind Loading	39 kg @ 160 km/h (86 lbs @ 100 mph)
Mounting	Pole mounting kit included for 30mm (1.18") to 90mm (3.54") OD pipes

Environmental

Outdoor Ingress Protection Rating	IP67
Operating Temperature	-40°C to +55°C (-40°F to 131°F)
Operating Humidity	5 to 100% condensing
Operating Altitude	4420 m (14500') maximum
Shock & Vibration	ETS 300-019-2-4 class 4M5

Features

Gigabit Ethernet	10/100/1000-BASE-T
Dual Link Operation	2 independent dual-stream radios operating on non-contiguous frequencies Automatic load balancing of traffic across 4 total MIMO streams with individual stream encoding up to 256 QAM
Management Services	Mimosa cloud monitoring and management SNMPv2 & Syslog legacy monitoring HTTPS HTML 5 based Web UI 2.4 GHz 802.11b/g/n radio for local management access
Smart Antenna Alignment	Hands-Free dedicated 2.4 GHz Wi-Fi management radio
Smart Spectrum Management	Active scan monitors/logs ongoing RF interference across channels (no service impact) Dynamic auto-optimization of channel and bandwidth use
Security	128-bit AES PSK with hardware acceleration
QoS	Supports 4 pre-configured QoS levels
GPS Location	GNSS-1 (GPS + GLONASS)
Colocation Synchronization	1PPS GPS TX/RX synchronization for collocated co-channel radios Adjustable up/downstream bandwidth ratio

Regulatory + Compliance

Approvals	FCC Part 15.407, IC RS10, CE, ETSI 301 893/302 502
RoHS Compliance	Yes
Safety	UL/EC/EN/ 60950-1 + CSA-22.2