



# FIBER OPTIC PIGTAILS

PRODUCT CATALOG

≡ **ConnLink**

2022 EDITION





**☰ ConnLink**

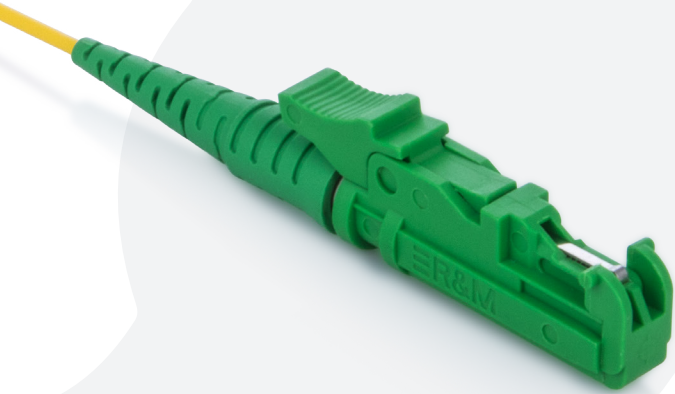
# Table of Contents

## FIBER OPTIC PIGTAILS

<b>E2000 PIGTAILS.....</b>	<b>5</b>
Pigtail ConnLink E2000/APC, SM .....	5
Pigtail ConnLink E2000/UPC, SM .....	6
Pigtail ConnLink E2000/UPC, MM. ....	7
<b>FC PIGTAILS .....</b>	<b>8</b>
Pigtail ConnLink FC/APC, SM .....	8
Pigtail ConnLink FC/UPC, SM .....	9
Pigtail ConnLink FC/UPC, MM. ....	10
<b>LC PIGTAILS.....</b>	<b>11</b>
Pigtail ConnLink LC/APC, SM .....	11
Pigtail ConnLink LC/UPC, SM .....	12
Pigtail ConnLink LC/UPC, MM. ....	13
<b>SC PIGTAILS .....</b>	<b>14</b>
Pigtail ConnLink SC/APC, SM .....	14
Pigtail ConnLink SC/UPC, SM .....	15
Pigtail ConnLink SC/UPC, MM. ....	16
<b>ST PIGTAILS.....</b>	<b>17</b>
Pigtail ConnLink ST/APC, SM .....	17
Pigtail ConnLink ST/UPC, SM .....	18
Pigtail ConnLink ST/UPC, MM. ....	19
<b>MTRJ PIGTAILS.....</b>	<b>20</b>
Pigtail ConnLink MTRJ, SM .....	20
Pigtail ConnLink MTRJ, MM. ....	21

# PIGTAIL CONNLINK E2000/APC, SM

9/125 ITU-T G.652D/G.657A2/G.657B3



Pigtail ConnLink E2000/APC, SM is a high quality single mode pigtail from the renowned ConnLink brand. Fiber in 0.25mm clear cover and LSZH jacket (halogen-free, flame retardant and emits limited smoke during burning) with 0.9mm diameter in yellow (G.652D) / blue (G.657A2) / purple (G.657B3) color. The ceramic ferrule is ground at an angle of 8 degrees (E2000/APC).

Pigtails are mainly used in FTTx installations - the last mile, at the terminations of client cables, as well as in splice closures and distribution boxes for connecting and separating bus cables. Pigtails are covered with a SemiStrip / EasyStrip coating, which allows easy removal, without the need for special tools. Pigtails are compliant with the requirements of PN-EN 61754 standard.

**Available fiber standards:**

- SM G.652D
- SM G.657A2
- SM G.657B3

Minimal bending radius according to fibre type



Impact of the applied bending radius of the fibre on the attenuation

Uncabled fibre macrobending loss	ITU-T Standard by fibre type								
	G.657B3			G.657A2/B2			G.657A1		G.652D
Fibre type									
Radius (mm)	10	7.5	5	15	10	7.5	15	10	30
Number of turns	1	1	1	10	1	1	10	1	100
Max. at 1550 nm (dB)	0.03	0.08	0.15	0.03	0.1	0.5	0.25	0.75	0.1
Max. at 1625 nm (dB)	0.1	0.25	0.45	0.1	0.2	1.0	1.0	1.5	-

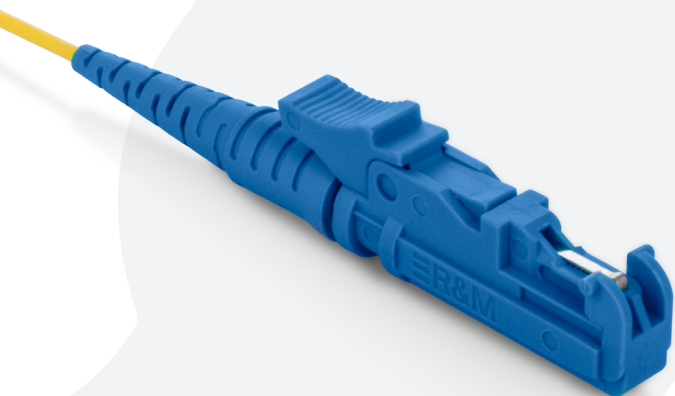
TECHNICAL SPECIFICATION	CONNECTOR	SILVER <sub>Class</sub>	GOLD <sub>Class</sub>	PLATINUM <sub>Class</sub>
Max. Insertion losses relative to Master (IEC 61300-3-4) [dB]	SM UPC	≤ 0,30	≤ 0,15	≤ 0,10
	SM APC	≤ 0,30	≤ 0,15	≤ 0,10
	MM PC	≤ 0,30	≤ 0,15	≤ 0,10
Avg. Insertion losses relative to Master (IEC 61300-3-4) [dB]	SM UPC	≤ 0,15	≤ 0,10	≤ 0,08
	SM APC	≤ 0,15	≤ 0,10	≤ 0,08
	MM PC	≤ 0,15	≤ 0,10	≤ 0,08
Reflection losses (IEC 61300-3-6) [dB]	SM UPC	≥ 50	≥ 50	≥ 55
	SM APC	≥ 60	≥ 65	≥ 65
	MM PC	≥ 30	≥ 35	≥ 35
Max. Insertion losses each-to-each (IEC 61300-3-34) [dB]	SM UPC	≤ 0,30	≤ 0,15	≤ 0,10
	SM APC	≤ 0,30	≤ 0,15	≤ 0,10
	MM PC	≤ 0,30	≤ 0,15	≤ 0,10
Insertion losses each-to-each (IEC 61300-3-34) [dB] (mean / 97%)	SM UPC	≤ 0,15 / ≤ 0,30 (97%)	≤ 0,1 / ≤ 0,15 (97%)	≤ 0,08 / ≤ 0,10 (97%)
	SM APC	≤ 0,15 / ≤ 0,30 (97%)	≤ 0,1 / ≤ 0,15 (97%)	≤ 0,08 / ≤ 0,10 (97%)
	MM PC	≤ 0,15 / ≤ 0,30 (97%)	≤ 0,1 / ≤ 0,15 (97%)	≤ 0,08 / ≤ 0,10 (97%)

**Product information**

Product name	Connector type	Connector quality class	Fiber standard according to ITU-T	Coating color	Coating material	Ferrule	Cable diameter [mm]
Pigtail ConnLink E2000/APC, SM	E2000/APC	SILVER / GOLD / PLATINUM	G.652D	Yellow	LSZH	Ceramic	~0.9
			G.657A2	Blue			
			G.657B3	Purple			

# PIGTAIL CONNLINK E2000/UPC, SM

9/125 ITU-T G.652D/G.657A2/G.657B3



Pigtail ConnLink E2000/UPC, SM is a high quality single mode pigtail from the renowned ConnLink brand. Fiber in 0.25mm clear cover and LSZH jacket (halogen-free, flame retardant and emits limited smoke during burning) with 0.9mm diameter in yellow (G.652D) / blue (G.657A2) / purple (G.657B3) color. The ceramic ferrule is ground at right angle (E2000/UPC).

Pigtails are mainly used in FTTx installations - the last mile, at the terminations of client cables, as well as in splice closures and distribution boxes for connecting and separating bus cables. Pigtails are covered with a SemiStrip / EasyStrip coating, which allows easy removal, without the need for special tools. Pigtails are compliant with the requirements of PN-EN 61754 standard.

**Available fiber standards:**

- SM G.652D
- SM G.657A2
- SM G.657B3

Minimal bending radius according to fibre type



Impact of the applied bending radius of the fibre on the attenuation

Uncabled fibre macrobending loss	ITU-T Standard by fibre type								
	G.657B3			G.657A2/B2			G.657A1		G.652D
Fibre type									
Radius (mm)	10	7.5	5	15	10	7.5	15	10	30
Number of turns	1	1	1	10	1	1	10	1	100
Max. at 1550 nm (dB)	0.03	0.08	0.15	0.03	0.1	0.5	0.25	0.75	0.1
Max. at 1625 nm (dB)	0.1	0.25	0.45	0.1	0.2	1.0	1.0	1.5	-

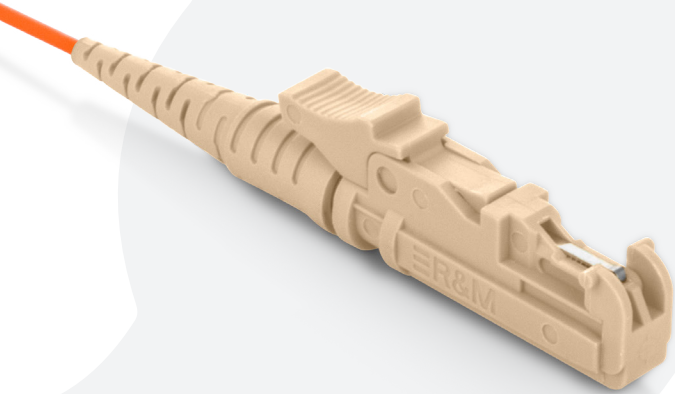
TECHNICAL SPECIFICATION	CONNECTOR	SILVER <sub>Class</sub>	GOLD <sub>Class</sub>	PLATINUM <sub>Class</sub>
		Max. Insertion losses relative to Master (IEC 61300-3-4) [dB]	SM UPC SM APC MM PC	≤ 0,30 ≤ 0,30 ≤ 0,30
Avg. Insertion losses relative to Master (IEC 61300-3-4) [dB]	SM UPC SM APC MM PC	≤ 0,15 ≤ 0,15 ≤ 0,15	≤ 0,10 ≤ 0,10 ≤ 0,10	≤ 0,08 ≤ 0,08 ≤ 0,08
Reflection losses (IEC 61300-3-6) [dB]	SM UPC SM APC MM PC	≥ 50 ≥ 60 ≥ 30	≥ 50 ≥ 65 ≥ 35	≥ 55 ≥ 65 ≥ 35
Max. Insertion losses each-to-each (IEC 61300-3-34) [dB]	SM UPC SM APC MM PC	≤ 0,30 ≤ 0,30 ≤ 0,30	≤ 0,15 ≤ 0,15 ≤ 0,15	≤ 0,10 ≤ 0,10 ≤ 0,10
Insertion losses each-to-each (IEC 61300-3-34) [dB] (mean / 97%)	SM UPC SM APC MM PC	≤ 0,15 / ≤ 0,30 (97%) ≤ 0,15 / ≤ 0,30 (97%) ≤ 0,15 / ≤ 0,30 (97%)	≤ 0,1 / ≤ 0,15 (97%) ≤ 0,1 / ≤ 0,15 (97%) ≤ 0,1 / ≤ 0,15 (97%)	≤ 0,08 / ≤ 0,10 (97%) ≤ 0,08 / ≤ 0,10 (97%) ≤ 0,08 / ≤ 0,10 (97%)

**Product information**

Product name	Connector type	Connector quality class	Fiber standard according to ITU-T	Coating color	Coating material	Ferrule	Cable diameter [mm]
Pigtail ConnLink E2000/UPC, SM	E2000/UPC	SILVER / GOLD / PLATINUM	G.652D	Yellow	LSZH	Ceramic	~0.9
			G.657A2	Blue			
			G.657B3	Purple			

# PIGTAIL CONNLINK E2000/UPC, MM

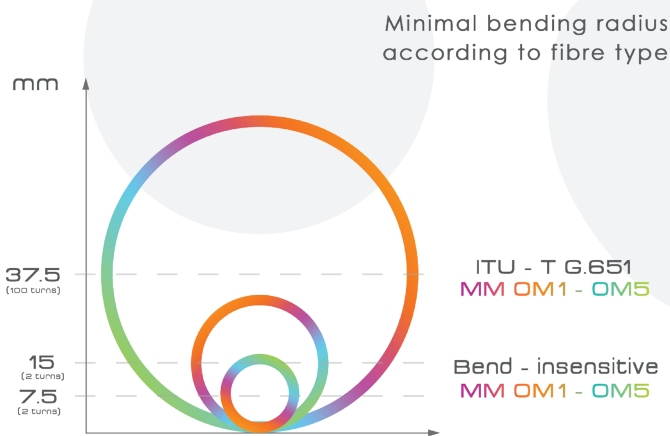
62.5/125 ITU-T OM1, 50/125 ITU-T OM2/OM3/OM4/OM5 Bend Insensitive



Pigtail ConnLink E2000/UPC, MM - high quality multimode pigtail from renowned ConnLink brand. Fiber in 0.25mm clear cover and LSZH jacket (halogen-free, flame retardant and emits limited smoke during burning) with 0.9mm diameter in orange (OM1/OM2) / turquoise (OM3) / pink (OM4) / lime (OM5) color. The ceramic ferrule is ground at right angle (E2000/UPC).

Pigtails are mainly used in FTTx installations - the last mile, at the terminations of client cables, as well as in splice closures and distribution boxes for connecting and separating bus cables. Pigtails are covered with a SemiStrip / EasyStrip coating, which allows easy removal, without the need for special tools. Pigtails are compliant with the requirements of PN-EN 61754 standard.

**Available fiber standards:**



Impact of the applied bending radius of the fibre on the attenuation

Uncabled fibre macrobending loss	Standard ITU-T / Bend-insensitive by fibre type		
Fibre type	MM OM1-OM5		
Radius (mm)	37.5	15	7.5
Number of turns	100	2	2
Max at 850 nm (dB)	0.5	0.1	0.2
Max at 1300 nm (dB)	0.5	0.3	0.5

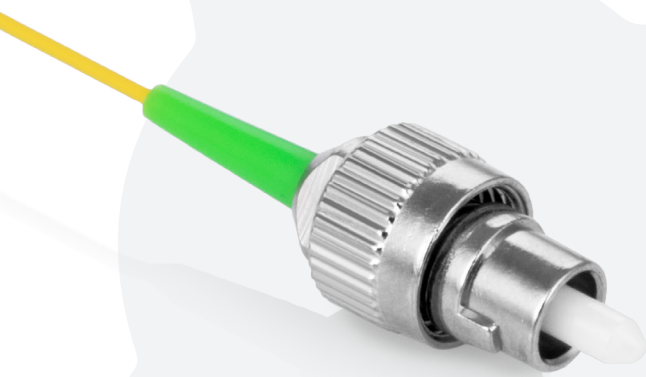
TECHNICAL SPECIFICATION	CONNECTOR	SILVER <sub>Class</sub>	GOLD <sub>Class</sub>	PLATINUM <sub>Class</sub>
Max. Insertion losses relative to Master (IEC 61300-3-4) [dB]	SM UPC	≤ 0,30	≤ 0,15	≤ 0,10
	SM APC	≤ 0,30	≤ 0,15	≤ 0,10
	MM PC	≤ 0,30	≤ 0,15	≤ 0,10
Avg. Insertion losses relative to Master (IEC 61300-3-4) [dB]	SM UPC	≤ 0,15	≤ 0,10	≤ 0,08
	SM APC	≤ 0,15	≤ 0,10	≤ 0,08
	MM PC	≤ 0,15	≤ 0,10	≤ 0,08
Reflection losses (IEC 61300-3-6) [dB]	SM UPC	≥ 50	≥ 50	≥ 55
	SM APC	≥ 60	≥ 65	≥ 65
	MM PC	≥ 30	≥ 35	≥ 35
Max. Insertion losses each-to-each (IEC 61300-3-34) [dB]	SM UPC	≤ 0,30	≤ 0,15	≤ 0,10
	SM APC	≤ 0,30	≤ 0,15	≤ 0,10
	MM PC	≤ 0,30	≤ 0,15	≤ 0,10
Insertion losses each-to-each (IEC 61300-3-34) [dB] (mean / 97%)	SM UPC	≤ 0,15 / ≤ 0,30 (97%)	≤ 0,1 / ≤ 0,15 (97%)	≤ 0,08 / ≤ 0,10 (97%)
	SM APC	≤ 0,15 / ≤ 0,30 (97%)	≤ 0,1 / ≤ 0,15 (97%)	≤ 0,08 / ≤ 0,10 (97%)
	MM PC	≤ 0,15 / ≤ 0,30 (97%)	≤ 0,1 / ≤ 0,15 (97%)	≤ 0,08 / ≤ 0,10 (97%)

**Product information**

Product name	Connector type	Connector quality class	Fiber standard according to ITU-T	Coating color	Coating material	Ferrule	Cable diameter [mm]
Pigtail ConnLink E2000/UPC, MM	E2000/UPC	SILVER / GOLD / PLATINUM	OM1/OM2	Orange	LSZH	Ceramic	~0.9
			OM3	Turquoise			
			OM4	Pink			
			OM5	Lime			

# PIGTAIL CONNLINK FC/APC, SM

9/125 ITU-T G.652D/G.657A2/G.657B3



Pigtail ConnLink FC/APC, SM is a high quality single mode pigtail from the renowned ConnLink brand. Fiber in 0.25mm clear cover and LSZH jacket (halogen-free, flame retardant and emits limited smoke during burning) with 0.9mm diameter in yellow (G.652D) / blue (G.657A2) / purple (G.657B3) color. The ceramic ferrule is ground at an angle of 8 degrees (FC/APC).

Pigtails are mainly used in FTTx installations - the last mile, at the terminations of client cables, as well as in splice closures and distribution boxes for connecting and separating bus cables. Pigtails are covered with a SemiStrip / EasyStrip coating, which allows easy removal, without the need for special tools. Pigtails are compliant with the requirements of PN-EN 61754 standard.

**Available fiber standards:**

- SM G.652D
- SM G.657A2
- SM G.657B3

Minimal bending radius according to fibre type



Impact of the applied bending radius of the fibre on the attenuation

Uncabled fibre macrobending loss	ITU-T Standard by fibre type								
	G.657B3			G.657A2/B2			G.657A1		G.652D
Fibre type									
Radius (mm)	10	7.5	5	15	10	7.5	15	10	30
Number of turns	1	1	1	10	1	1	10	1	100
Max. at 1550 nm (dB)	0.03	0.08	0.15	0.03	0.1	0.5	0.25	0.75	0.1
Max. at 1625 nm (dB)	0.1	0.25	0.45	0.1	0.2	1.0	1.0	1.5	-

TECHNICAL SPECIFICATION	CONNECTOR	SILVER <sub>Class</sub>	GOLD <sub>Class</sub>	PLATINUM <sub>Class</sub>
Max. Insertion losses relative to Master (IEC 61300-3-4) [dB]	SM UPC	≤ 0,30	≤ 0,15	≤ 0,10
	SM APC	≤ 0,30	≤ 0,15	≤ 0,10
	MM PC	≤ 0,30	≤ 0,15	≤ 0,10
Avg. Insertion losses relative to Master (IEC 61300-3-4) [dB]	SM UPC	≤ 0,15	≤ 0,10	≤ 0,08
	SM APC	≤ 0,15	≤ 0,10	≤ 0,08
	MM PC	≤ 0,15	≤ 0,10	≤ 0,08
Reflection losses (IEC 61300-3-6) [dB]	SM UPC	≥ 50	≥ 50	≥ 55
	SM APC	≥ 60	≥ 65	≥ 65
	MM PC	≥ 30	≥ 35	≥ 35
Max. Insertion losses each-to-each (IEC 61300-3-34) [dB]	SM UPC	≤ 0,30	≤ 0,15	≤ 0,10
	SM APC	≤ 0,30	≤ 0,15	≤ 0,10
	MM PC	≤ 0,30	≤ 0,15	≤ 0,10
Insertion losses each-to-each (IEC 61300-3-34) [dB] (mean / 97%)	SM UPC	≤ 0,15 / ≤ 0,30 (97%)	≤ 0,1 / ≤ 0,15 (97%)	≤ 0,08 / ≤ 0,10 (97%)
	SM APC	≤ 0,15 / ≤ 0,30 (97%)	≤ 0,1 / ≤ 0,15 (97%)	≤ 0,08 / ≤ 0,10 (97%)
	MM PC	≤ 0,15 / ≤ 0,30 (97%)	≤ 0,1 / ≤ 0,15 (97%)	≤ 0,08 / ≤ 0,10 (97%)

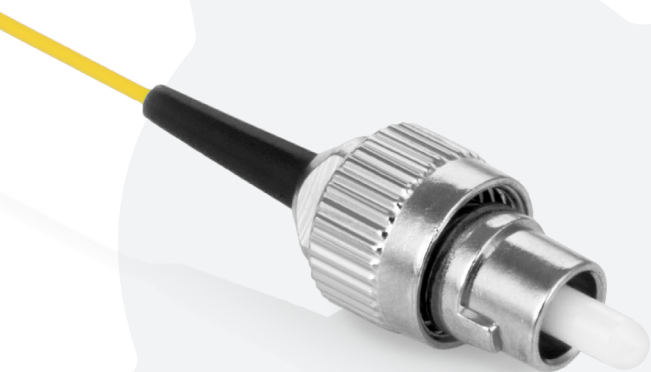
**Product information**

Product name	Connector type	Connector quality class	Fiber standard according to ITU-T	Coating color	Coating material	Ferrule	Cable diameter [mm]
Pigtail ConnLink FC/APC, SM	FC/APC	SILVER / GOLD / PLATINUM	G.652D	Yellow	LSZH	Ceramic	~0.9
			G.657A2	Blue			
			G.657B3	Purple			



# PIGTAIL CONNLINK FC/UPC, SM

9/125 ITU-T G.652D/G.657A2/G.657B3



Pigtail ConnLink FC/UPC, SM is a high quality single mode pigtail from the renowned ConnLink brand. Fiber in 0.25mm clear cover and LSZH jacket (halogen-free, flame retardant and emits limited smoke during burning) with 0.9mm diameter in yellow (G.652D) / blue (G.657A2) / purple (G.657B3) color. The ceramic ferrule is ground at an angle of 8 degrees (FC/UPC).

Pigtails are mainly used in FTTx installations - the last mile, at the terminations of client cables, as well as in splice closures and distribution boxes for connecting and separating bus cables. Pigtails are covered with a SemiStrip / EasyStrip coating, which allows easy removal, without the need for special tools. Pigtails are compliant with the requirements of PN-EN 61754 standard.

### Available fiber standards:

- SM G.652D
- SM G.657A2
- SM G.657B3

Minimal bending radius according to fibre type



Impact of the applied bending radius of the fibre on the attenuation

Uncabled fibre macrobending loss	ITU-T Standard by fibre type								
	G.657B3		G.657A2/B2		G.657A1		G.652D		
Fibre type	10	7.5	5	15	10	7.5	15	10	30
Radius (mm)	10	7.5	5	15	10	7.5	15	10	30
Number of turns	1	1	1	10	1	1	10	1	100
Max. at 1550 nm (dB)	0.03	0.08	0.15	0.03	0.1	0.5	0.25	0.75	0.1
Max. at 1625 nm (dB)	0.1	0.25	0.45	0.1	0.2	1.0	1.0	1.5	-

TECHNICAL SPECIFICATION	CONNECTOR	SILVER <sub>Class</sub>			GOLD <sub>Class</sub>			PLATINUM <sub>Class</sub>		
		SM UPC	SM APC	MM PC	SM UPC	SM APC	MM PC	SM UPC	SM APC	MM PC
Max. Insertion losses relative to Master (IEC 61300-3-4) [dB]	SM UPC	≤ 0,30	≤ 0,15	≤ 0,10	≤ 0,30	≤ 0,15	≤ 0,10	≤ 0,30	≤ 0,15	≤ 0,10
	SM APC	≤ 0,30	≤ 0,15	≤ 0,10	≤ 0,30	≤ 0,15	≤ 0,10	≤ 0,30	≤ 0,15	≤ 0,10
	MM PC	≤ 0,30	≤ 0,15	≤ 0,10	≤ 0,30	≤ 0,15	≤ 0,10	≤ 0,30	≤ 0,15	≤ 0,10
Avg. Insertion losses relative to Master (IEC 61300-3-4) [dB]	SM UPC	≤ 0,15	≤ 0,10	≤ 0,08	≤ 0,15	≤ 0,10	≤ 0,08	≤ 0,15	≤ 0,10	≤ 0,08
	SM APC	≤ 0,15	≤ 0,10	≤ 0,08	≤ 0,15	≤ 0,10	≤ 0,08	≤ 0,15	≤ 0,10	≤ 0,08
	MM PC	≤ 0,15	≤ 0,10	≤ 0,08	≤ 0,15	≤ 0,10	≤ 0,08	≤ 0,15	≤ 0,10	≤ 0,08
Reflection losses (IEC 61300-3-6) [dB]	SM UPC	≥ 50	≥ 50	≥ 55	≥ 50	≥ 50	≥ 55	≥ 50	≥ 50	≥ 55
	SM APC	≥ 60	≥ 65	≥ 65	≥ 60	≥ 65	≥ 65	≥ 60	≥ 65	≥ 65
	MM PC	≥ 30	≥ 35	≥ 35	≥ 30	≥ 35	≥ 35	≥ 30	≥ 35	≥ 35
Max. Insertion losses each-to-each (IEC 61300-3-34) [dB]	SM UPC	≤ 0,30	≤ 0,15	≤ 0,10	≤ 0,30	≤ 0,15	≤ 0,10	≤ 0,30	≤ 0,15	≤ 0,10
	SM APC	≤ 0,30	≤ 0,15	≤ 0,10	≤ 0,30	≤ 0,15	≤ 0,10	≤ 0,30	≤ 0,15	≤ 0,10
	MM PC	≤ 0,30	≤ 0,15	≤ 0,10	≤ 0,30	≤ 0,15	≤ 0,10	≤ 0,30	≤ 0,15	≤ 0,10
Insertion losses each-to-each (IEC 61300-3-34) [dB] (mean / 97%)	SM UPC	≤ 0,15 / ≤ 0,30 (97%)	≤ 0,1 / ≤ 0,15 (97%)	≤ 0,08 / ≤ 0,10 (97%)	≤ 0,15 / ≤ 0,30 (97%)	≤ 0,1 / ≤ 0,15 (97%)	≤ 0,08 / ≤ 0,10 (97%)	≤ 0,15 / ≤ 0,30 (97%)	≤ 0,1 / ≤ 0,15 (97%)	≤ 0,08 / ≤ 0,10 (97%)
	SM APC	≤ 0,15 / ≤ 0,30 (97%)	≤ 0,1 / ≤ 0,15 (97%)	≤ 0,08 / ≤ 0,10 (97%)	≤ 0,15 / ≤ 0,30 (97%)	≤ 0,1 / ≤ 0,15 (97%)	≤ 0,08 / ≤ 0,10 (97%)	≤ 0,15 / ≤ 0,30 (97%)	≤ 0,1 / ≤ 0,15 (97%)	≤ 0,08 / ≤ 0,10 (97%)
	MM PC	≤ 0,15 / ≤ 0,30 (97%)	≤ 0,1 / ≤ 0,15 (97%)	≤ 0,08 / ≤ 0,10 (97%)	≤ 0,15 / ≤ 0,30 (97%)	≤ 0,1 / ≤ 0,15 (97%)	≤ 0,08 / ≤ 0,10 (97%)	≤ 0,15 / ≤ 0,30 (97%)	≤ 0,1 / ≤ 0,15 (97%)	≤ 0,08 / ≤ 0,10 (97%)

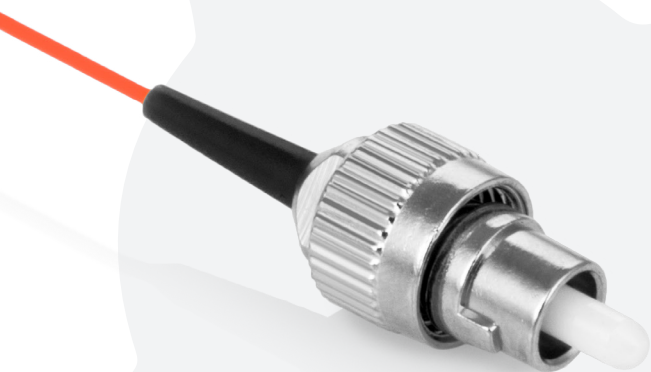


### Product information

Product name	Connector type	Connector quality class	Fiber standard according to ITU-T	Coating color	Coating material	Ferrule	Cable diameter [mm]
Pigtail ConnLink FC/UPC, SM	FC/UPC	SILVER / GOLD / PLATINUM	G.652D	Yellow	LSZH	Ceramic	~0.9
			G.657A2	Blue			
			G.657B3	Purple			

# PIGTAIL CONNLINK FC/UPC, MM

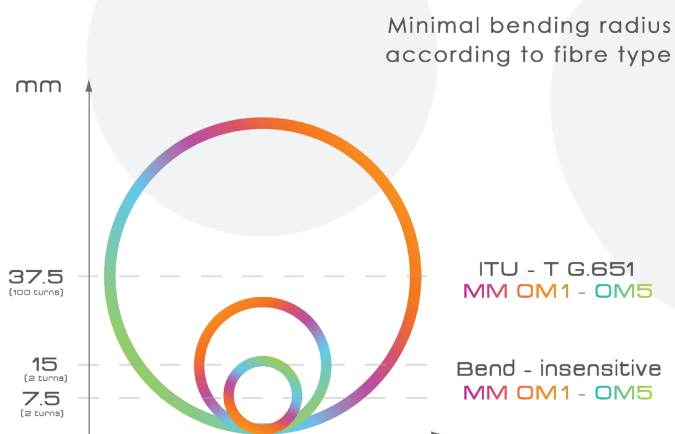
62.5/125 ITU-T OM1, 50/125 ITU-T OM2/OM3/OM4/OM5 Bend Insensitive



Pigtail ConnLink FC/UPC, MM - high quality multimode pigtail from renowned ConnLink brand. Fiber in 0.25mm clear cover and LSZH jacket (halogen-free, flame retardant and emits limited smoke during burning) with 0.9mm diameter in orange (OM1/OM2) / turquoise (OM3) / pink (OM4) / lime (OM5) color. The ceramic ferrule is ground at right angle (FC/UPC).

Pigtails are mainly used in FTTx installations - the last mile, at the terminations of client cables, as well as in splice closures and distribution boxes for connecting and separating bus cables. Pigtails are covered with a SemiStrip / EasyStrip coating, which allows easy removal, without the need for special tools. Pigtails are compliant with the requirements of PN-EN 61754 standard.

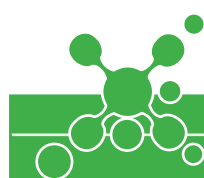
**Available fiber standards:**



Impact of the applied bending radius of the fibre on the attenuation

Uncabled fibre macrobending loss	Standard ITU-T / Bend-insensitive by fibre type		
Fibre type	MM OM1-OM5		
Radius (mm)	37.5	15	7.5
Number of turns	100	2	2
Max at 850 nm (dB)	0.5	0.1	0.2
Max at 1300 nm (dB)	0.5	0.3	0.5

TECHNICAL SPECIFICATION	CONNECTOR	SILVER <sub>Class</sub>	GOLD <sub>Class</sub>	PLATINUM <sub>Class</sub>
Max. Insertion losses relative to Master (IEC 61300-3-4) [dB]	SM UPC	≤ 0,30	≤ 0,15	≤ 0,10
	SM APC	≤ 0,30	≤ 0,15	≤ 0,10
	MM PC	≤ 0,30	≤ 0,15	≤ 0,10
Avg. Insertion losses relative to Master (IEC 61300-3-4) [dB]	SM UPC	≤ 0,15	≤ 0,10	≤ 0,08
	SM APC	≤ 0,15	≤ 0,10	≤ 0,08
	MM PC	≤ 0,15	≤ 0,10	≤ 0,08
Reflection losses (IEC 61300-3-6) [dB]	SM UPC	≥ 50	≥ 50	≥ 55
	SM APC	≥ 60	≥ 65	≥ 65
	MM PC	≥ 30	≥ 35	≥ 35
Max. Insertion losses each-to-each (IEC 61300-3-34) [dB]	SM UPC	≤ 0,30	≤ 0,15	≤ 0,10
	SM APC	≤ 0,30	≤ 0,15	≤ 0,10
	MM PC	≤ 0,30	≤ 0,15	≤ 0,10
Insertion losses each-to-each (IEC 61300-3-34) [dB] (mean / 97%)	SM UPC	≤ 0,15 / ≤ 0,30 (97%)	≤ 0,1 / ≤ 0,15 (97%)	≤ 0,08 / ≤ 0,10 (97%)
	SM APC	≤ 0,15 / ≤ 0,30 (97%)	≤ 0,1 / ≤ 0,15 (97%)	≤ 0,08 / ≤ 0,10 (97%)
	MM PC	≤ 0,15 / ≤ 0,30 (97%)	≤ 0,1 / ≤ 0,15 (97%)	≤ 0,08 / ≤ 0,10 (97%)

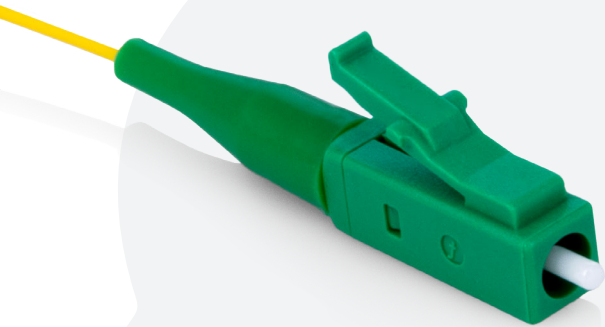


Product information							
Product name	Connector type	Connector quality class	Fiber standard according to ITU-T	Coating color	Coating material	Ferrule	Cable diameter [mm]
Pigtail ConnLink FC/UPC, MM	FC/UPC	SILVER / GOLD / PLATINUM	OM1/OM2	Orange	LSZH	Ceramic	~0.9
			OM3	Turquoise			
			OM4	Pink			
			OM5	Lime			



# PIGTAIL CONNLINK LC/APC, SM

9/125 ITU-T G.652D/G.657A2/G.657B3



Pigtail ConnLink LC/APC, SM is a high quality single mode pigtail from the renowned ConnLink brand. Fiber in 0.25mm clear cover and LSZH jacket (halogen-free, flame retardant and emits limited smoke during burning) with 0.9mm diameter in yellow (G.652D) / blue (G.657A2) / purple (G.657B3) color. The ceramic ferrule is ground at an angle of 8 degrees (LC/APC).

Pigtails are mainly used in FTTx installations - the last mile, at the terminations of client cables, as well as in splice closures and distribution boxes for connecting and separating bus cables. Pigtails are covered with a SemiStrip / EasyStrip coating, which allows easy removal, without the need for special tools. Pigtails are compliant with the requirements of PN-EN 61754 standard.

**Available fiber standards:**

- SM G.652D
- SM G.657A2
- SM G.657B3

Minimal bending radius according to fibre type



Impact of the applied bending radius of the fibre on the attenuation

Uncabled fibre macrobending loss	ITU-T Standard by fibre type								
	G.657B3		G.657A2/B2		G.657A1		G.652D		
Fibre type	10	7.5	5	15	10	7.5	15	10	30
Radius (mm)	10	7.5	5	15	10	7.5	15	10	30
Number of turns	1	1	1	10	1	1	10	1	100
Max. at 1550 nm (dB)	0.03	0.08	0.15	0.03	0.1	0.5	0.25	0.75	0.1
Max. at 1625 nm (dB)	0.1	0.25	0.45	0.1	0.2	1.0	1.0	1.5	-

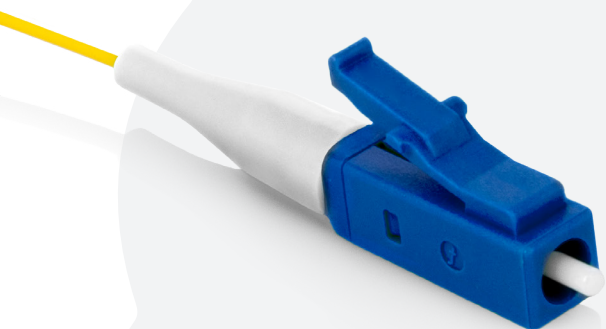
TECHNICAL SPECIFICATION	CONNECTOR	SILVER <sub>Class</sub>	GOLD <sub>Class</sub>	PLATINUM <sub>Class</sub>
Max. Insertion losses relative to Master (IEC 61300-3-4) [dB]	SM UPC	≤ 0,30	≤ 0,15	≤ 0,10
	SM APC	≤ 0,30	≤ 0,15	≤ 0,10
	MM PC	≤ 0,30	≤ 0,15	≤ 0,10
Avg. Insertion losses relative to Master (IEC 61300-3-4) [dB]	SM UPC	≤ 0,15	≤ 0,10	≤ 0,08
	SM APC	≤ 0,15	≤ 0,10	≤ 0,08
	MM PC	≤ 0,15	≤ 0,10	≤ 0,08
Reflection losses (IEC 61300-3-6) [dB]	SM UPC	≥ 50	≥ 50	≥ 55
	SM APC	≥ 60	≥ 65	≥ 65
	MM PC	≥ 30	≥ 35	≥ 35
Max. Insertion losses each-to-each (IEC 61300-3-34) [dB]	SM UPC	≤ 0,30	≤ 0,15	≤ 0,10
	SM APC	≤ 0,30	≤ 0,15	≤ 0,10
	MM PC	≤ 0,30	≤ 0,15	≤ 0,10
Insertion losses each-to-each (IEC 61300-3-34) [dB] (mean / 97%)	SM UPC	≤ 0,15 / ≤ 0,30 (97%)	≤ 0,1 / ≤ 0,15 (97%)	≤ 0,08 / ≤ 0,10 (97%)
	SM APC	≤ 0,15 / ≤ 0,30 (97%)	≤ 0,1 / ≤ 0,15 (97%)	≤ 0,08 / ≤ 0,10 (97%)
	MM PC	≤ 0,15 / ≤ 0,30 (97%)	≤ 0,1 / ≤ 0,15 (97%)	≤ 0,08 / ≤ 0,10 (97%)

**Product information**

Product name	Connector type	Connector quality class	Fiber standard according to ITU-T	Coating color	Coating material	Ferrule	Cable diameter [mm]
Pigtail ConnLink LC/APC, SM	LC/APC	SILVER / GOLD / PLATINUM	G.652D	Yellow	LSZH	Ceramic	~0.9
			G.657A2	Blue			
			G.657B3	Purple			

# PIGTAIL CONNLINK LC/UPC, SM

9/125 ITU-T G.652D/G.657A2/G.657B3



Pigtail ConnLink LC/UPC, SM is a high quality single mode pigtail from the renowned ConnLink brand. Fiber in 0.25mm clear cover and LSZH jacket (halogen-free, flame retardant and emits limited smoke during burning) with 0.9mm diameter in yellow (G.652D) / blue (G.657A2) / purple (G.657B3) color. The ceramic ferrule is ground at right angle (LC/UPC).

Pigtails are mainly used in FTTx installations - the last mile, at the terminations of client cables, as well as in splice closures and distribution boxes for connecting and separating bus cables. Pigtails are covered with a SemiStrip / EasyStrip coating, which allows easy removal, without the need for special tools. Pigtails are compliant with the requirements of PN-EN 61754 standard.

**Available fiber standards:**

- SM G.652D
- SM G.657A2
- SM G.657B3

Minimal bending radius according to fibre type



Impact of the applied bending radius of the fibre on the attenuation

Uncabled fibre macrobending loss	ITU-T Standard by fibre type								
	G.657B3			G.657A2/B2			G.657A1		G.652D
Fibre type									
Radius (mm)	10	7.5	5	15	10	7.5	15	10	30
Number of turns	1	1	1	10	1	1	10	1	100
Max. at 1550 nm (dB)	0.03	0.08	0.15	0.03	0.1	0.5	0.25	0.75	0.1
Max. at 1625 nm (dB)	0.1	0.25	0.45	0.1	0.2	1.0	1.0	1.5	-

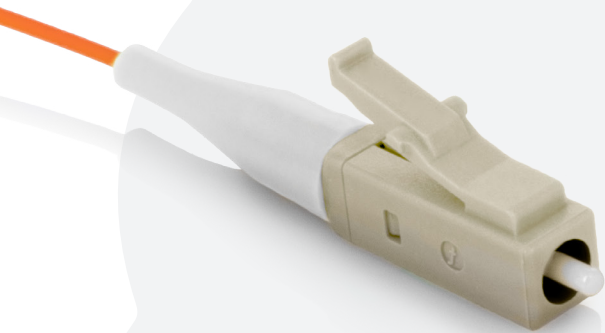
TECHNICAL SPECIFICATION	CONNECTOR	SILVER <sub>Class</sub>	GOLD <sub>Class</sub>	PLATINUM <sub>Class</sub>
Max. Insertion losses relative to Master (IEC 61300-3-4) [dB]	SM UPC	≤ 0,30	≤ 0,15	≤ 0,10
	SM APC	≤ 0,30	≤ 0,15	≤ 0,10
	MM PC	≤ 0,30	≤ 0,15	≤ 0,10
Avg. Insertion losses relative to Master (IEC 61300-3-4) [dB]	SM UPC	≤ 0,15	≤ 0,10	≤ 0,08
	SM APC	≤ 0,15	≤ 0,10	≤ 0,08
	MM PC	≤ 0,15	≤ 0,10	≤ 0,08
Reflection losses (IEC 61300-3-6) [dB]	SM UPC	≥ 50	≥ 50	≥ 55
	SM APC	≥ 60	≥ 65	≥ 65
	MM PC	≥ 30	≥ 35	≥ 35
Max. Insertion losses each-to-each (IEC 61300-3-34) [dB]	SM UPC	≤ 0,30	≤ 0,15	≤ 0,10
	SM APC	≤ 0,30	≤ 0,15	≤ 0,10
	MM PC	≤ 0,30	≤ 0,15	≤ 0,10
Insertion losses each-to-each (IEC 61300-3-34) [dB] (mean / 97%)	SM UPC	≤ 0,15 / ≤ 0,30 (97%)	≤ 0,1 / ≤ 0,15 (97%)	≤ 0,08 / ≤ 0,10 (97%)
	SM APC	≤ 0,15 / ≤ 0,30 (97%)	≤ 0,1 / ≤ 0,15 (97%)	≤ 0,08 / ≤ 0,10 (97%)
	MM PC	≤ 0,15 / ≤ 0,30 (97%)	≤ 0,1 / ≤ 0,15 (97%)	≤ 0,08 / ≤ 0,10 (97%)



Product information							
Product name	Connector type	Connector quality class	Fiber standard according to ITU-T	Coating color	Coating material	Ferrule	Cable diameter [mm]
Pigtail ConnLink LC/UPC, SM	LC/UPC	SILVER / GOLD / PLATINUM	G.652D	Yellow	LSZH	Ceramic	~0.9
			G.657A2	Blue			
			G.657B3	Purple			

# PIGTAIL CONNLINK LC/UPC, MM

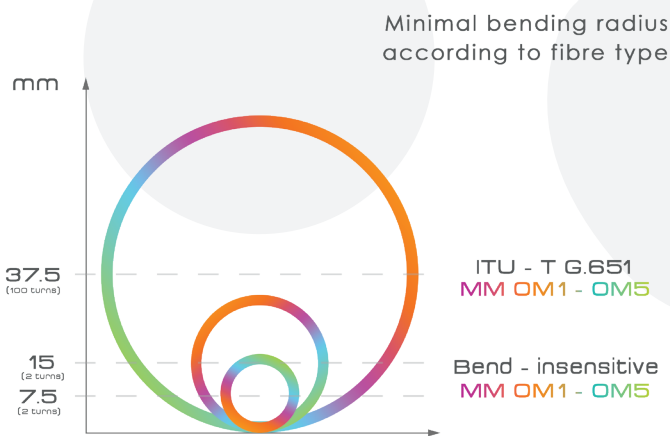
62.5/125 ITU-T OM1, 50/125 ITU-T OM2/OM3/OM4/OM5 Bend Insensitive



Pigtail ConnLink LC/UPC, MM - high quality multimode pigtail from renowned ConnLink brand. Fiber in 0.25mm clear cover and LSZH jacket (halogen-free, flame retardant and emits limited smoke during burning) with 0.9mm diameter in orange (OM1/OM2) / turquoise (OM3) / pink (OM4) / lime (OM5) color. The ceramic ferrule is ground at right angle (LC/UPC).

Pigtails are mainly used in FTTx installations - the last mile, at the terminations of client cables, as well as in splice closures and distribution boxes for connecting and separating bus cables. Pigtails are covered with a SemiStrip / EasyStrip coating, which allows easy removal, without the need for special tools. Pigtails are compliant with the requirements of PN-EN 61754 standard.

**Available fiber standards:**



Impact of the applied bending radius of the fibre on the attenuation

Uncabled fibre macrobending loss	Standard ITU-T / Bend-insensitive by fibre type		
Fibre type	MM OM1-OM5		
Radius (mm)	37.5	15	7.5
Number of turns	100	2	2
Max at 850 nm (dB)	0.5	0.1	0.2
Max at 1300 nm (dB)	0.5	0.3	0.5

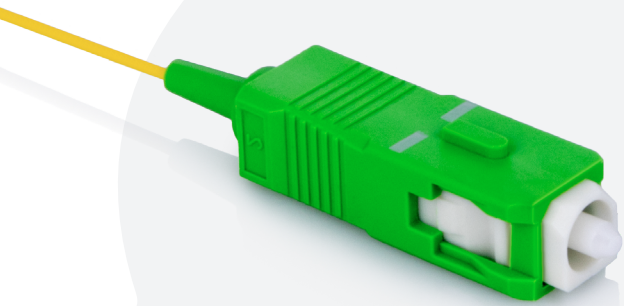
TECHNICAL SPECIFICATION	CONNECTOR	SILVER <sub>Class</sub>	GOLD <sub>Class</sub>	PLATINUM <sub>Class</sub>
Max. Insertion losses relative to Master (IEC 61300-3-4) [dB]	SM UPC	≤ 0,30	≤ 0,15	≤ 0,10
	SM APC	≤ 0,30	≤ 0,15	≤ 0,10
	MM PC	≤ 0,30	≤ 0,15	≤ 0,10
Avg. Insertion losses relative to Master (IEC 61300-3-4) [dB]	SM UPC	≤ 0,15	≤ 0,10	≤ 0,08
	SM APC	≤ 0,15	≤ 0,10	≤ 0,08
	MM PC	≤ 0,15	≤ 0,10	≤ 0,08
Reflection losses (IEC 61300-3-6) [dB]	SM UPC	≥ 50	≥ 50	≥ 55
	SM APC	≥ 60	≥ 65	≥ 65
	MM PC	≥ 30	≥ 35	≥ 35
Max. Insertion losses each-to-each (IEC 61300-3-34) [dB]	SM UPC	≤ 0,30	≤ 0,15	≤ 0,10
	SM APC	≤ 0,30	≤ 0,15	≤ 0,10
	MM PC	≤ 0,30	≤ 0,15	≤ 0,10
Insertion losses each-to-each (IEC 61300-3-34) [dB] (mean / 97%)	SM UPC	≤ 0,15 / ≤ 0,30 (97%)	≤ 0,1 / ≤ 0,15 (97%)	≤ 0,08 / ≤ 0,10 (97%)
	SM APC	≤ 0,15 / ≤ 0,30 (97%)	≤ 0,1 / ≤ 0,15 (97%)	≤ 0,08 / ≤ 0,10 (97%)
	MM PC	≤ 0,15 / ≤ 0,30 (97%)	≤ 0,1 / ≤ 0,15 (97%)	≤ 0,08 / ≤ 0,10 (97%)

**Product information**

Product name	Connector type	Connector quality class	Fiber standard according to ITU-T	Coating color	Coating material	Ferrule	Cable diameter [mm]
Pigtail ConnLink LC/UPC, MM	LC/UPC	SILVER / GOLD / PLATINUM	OM1/OM2	Orange	LSZH	Ceramic	~0.9
			OM3	Turquoise			
			OM4	Pink			
			OM5	Lime			

# PIGTAIL CONNLINK SC/APC, SM

9/125 ITU-T G.652D/G.657A2/G.657B3



Pigtail ConnLink SC/APC, SM is a high quality single mode pigtail from the renowned ConnLink brand. Fiber in 0.25mm clear cover and LSZH jacket (halogen-free, flame retardant and emits limited smoke during burning) with 0.9mm diameter in yellow (G.652D) / blue (G.657A2) / purple (G.657B3) color. The ceramic ferrule is ground at an angle of 8 degrees (SC/APC).

Pigtails are mainly used in FTTx installations - the last mile, at the terminations of client cables, as well as in splice closures and distribution boxes for connecting and separating bus cables. Pigtails are covered with a SemiStrip / EasyStrip coating, which allows easy removal, without the need for special tools. Pigtails are compliant with the requirements of PN-EN 61754 standard.

**Available fiber standards:**

- SM G.652D
- SM G.657A2
- SM G.657B3

Minimal bending radius according to fibre type



Impact of the applied bending radius of the fibre on the attenuation

Uncabled fibre macrobending loss	ITU-T Standard by fibre type								
	G.657B3			G.657A2/B2			G.657A1		G.652D
Fibre type									
Radius (mm)	10	7.5	5	15	10	7.5	15	10	30
Number of turns	1	1	1	10	1	1	10	1	100
Max. at 1550 nm (dB)	0.03	0.08	0.15	0.03	0.1	0.5	0.25	0.75	0.1
Max. at 1625 nm (dB)	0.1	0.25	0.45	0.1	0.2	1.0	1.0	1.5	-

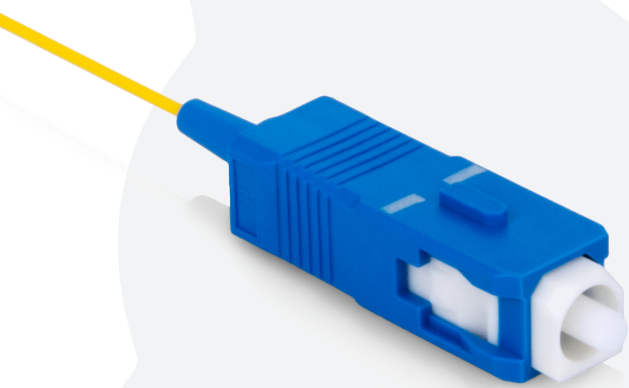
TECHNICAL SPECIFICATION	CONNECTOR	SILVER <sub>Class</sub>	GOLD <sub>Class</sub>	PLATINUM <sub>Class</sub>
Max. Insertion losses relative to Master (IEC 61300-3-4) [dB]	SM UPC	≤ 0,30	≤ 0,15	≤ 0,10
	SM APC	≤ 0,30	≤ 0,15	≤ 0,10
	MM PC	≤ 0,30	≤ 0,15	≤ 0,10
Avg. Insertion losses relative to Master (IEC 61300-3-4) [dB]	SM UPC	≤ 0,15	≤ 0,10	≤ 0,08
	SM APC	≤ 0,15	≤ 0,10	≤ 0,08
	MM PC	≤ 0,15	≤ 0,10	≤ 0,08
Reflection losses (IEC 61300-3-6) [dB]	SM UPC	≥ 50	≥ 50	≥ 55
	SM APC	≥ 60	≥ 65	≥ 65
	MM PC	≥ 30	≥ 35	≥ 35
Max. Insertion losses each-to-each (IEC 61300-3-34) [dB]	SM UPC	≤ 0,30	≤ 0,15	≤ 0,10
	SM APC	≤ 0,30	≤ 0,15	≤ 0,10
	MM PC	≤ 0,30	≤ 0,15	≤ 0,10
Insertion losses each-to-each (IEC 61300-3-34) [dB] (mean / 97%)	SM UPC	≤ 0,15 / ≤ 0,30 (97%)	≤ 0,1 / ≤ 0,15 (97%)	≤ 0,08 / ≤ 0,10 (97%)
	SM APC	≤ 0,15 / ≤ 0,30 (97%)	≤ 0,1 / ≤ 0,15 (97%)	≤ 0,08 / ≤ 0,10 (97%)
	MM PC	≤ 0,15 / ≤ 0,30 (97%)	≤ 0,1 / ≤ 0,15 (97%)	≤ 0,08 / ≤ 0,10 (97%)

**Product information**

Product name	Connector type	Connector quality class	Fiber standard according to ITU-T	Coating color	Coating material	Ferrule	Cable diameter [mm]
Pigtail ConnLink SC/APC, SM	SC/APC	SILVER / GOLD / PLATINUM	G.652D	Yellow	LSZH	Ceramic	~0.9
			G.657A2	Blue			
			G.657B3	Purple			

# PIGTAIL CONNLINK SC/UPC, SM

9/125 ITU-T G.652D/G.657A2/G.657B3



Pigtail ConnLink SC/UPC, SM is a high quality single mode pigtail from the renowned ConnLink brand. Fiber in 0.25mm clear cover and LSZH jacket (halogen-free, flame retardant and emits limited smoke during burning) with 0.9mm diameter in yellow (G.652D) / blue (G.657A2) / purple (G.657B3) color. The ceramic ferrule is ground at right angle (SC/UPC).

Pigtails are mainly used in FTTx installations - the last mile, at the terminations of client cables, as well as in splice closures and distribution boxes for connecting and separating bus cables. Pigtails are covered with a SemiStrip / EasyStrip coating, which allows easy removal, without the need for special tools. Pigtails are compliant with the requirements of PN-EN 61754 standard.

**Available fiber standards:**

- SM G.652D
- SM G.657A2
- SM G.657B3

Minimal bending radius according to fibre type



Impact of the applied bending radius of the fibre on the attenuation

Uncabled fibre macrobending loss	ITU-T Standard by fibre type								
	G.657B3			G.657A2/B2			G.657A1		G.652D
Fibre type									
Radius (mm)	10	7.5	5	15	10	7.5	15	10	30
Number of turns	1	1	1	10	1	1	10	1	100
Max. at 1550 nm (dB)	0.03	0.08	0.15	0.03	0.1	0.5	0.25	0.75	0.1
Max. at 1625 nm (dB)	0.1	0.25	0.45	0.1	0.2	1.0	1.0	1.5	-

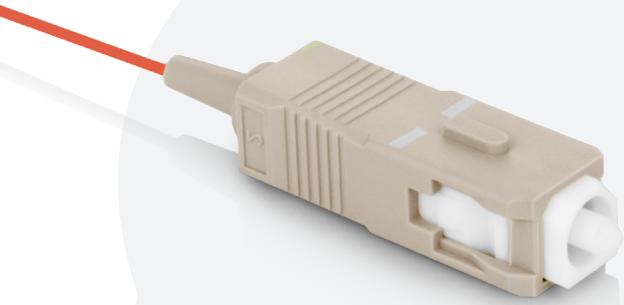
TECHNICAL SPECIFICATION	CONNECTOR	SILVER <sub>Class</sub>	GOLD <sub>Class</sub>	PLATINUM <sub>Class</sub>
Max. Insertion losses relative to Master (IEC 61300-3-4) [dB]	SM UPC	≤ 0,30	≤ 0,15	≤ 0,10
	SM APC	≤ 0,30	≤ 0,15	≤ 0,10
	MM PC	≤ 0,30	≤ 0,15	≤ 0,10
Avg. Insertion losses relative to Master (IEC 61300-3-4) [dB]	SM UPC	≤ 0,15	≤ 0,10	≤ 0,08
	SM APC	≤ 0,15	≤ 0,10	≤ 0,08
	MM PC	≤ 0,15	≤ 0,10	≤ 0,08
Reflection losses (IEC 61300-3-6) [dB]	SM UPC	≥ 50	≥ 50	≥ 55
	SM APC	≥ 60	≥ 65	≥ 65
	MM PC	≥ 30	≥ 35	≥ 35
Max. Insertion losses each-to-each (IEC 61300-3-34) [dB]	SM UPC	≤ 0,30	≤ 0,15	≤ 0,10
	SM APC	≤ 0,30	≤ 0,15	≤ 0,10
	MM PC	≤ 0,30	≤ 0,15	≤ 0,10
Insertion losses each-to-each (IEC 61300-3-34) [dB] (mean / 97%)	SM UPC	≤ 0,15 / ≤ 0,30 (97%)	≤ 0,1 / ≤ 0,15 (97%)	≤ 0,08 / ≤ 0,10 (97%)
	SM APC	≤ 0,15 / ≤ 0,30 (97%)	≤ 0,1 / ≤ 0,15 (97%)	≤ 0,08 / ≤ 0,10 (97%)
	MM PC	≤ 0,15 / ≤ 0,30 (97%)	≤ 0,1 / ≤ 0,15 (97%)	≤ 0,08 / ≤ 0,10 (97%)

**Product information**

Product name	Connector type	Connector quality class	Fiber standard according to ITU-T	Coating color	Coating material	Ferrule	Cable diameter [mm]
Pigtail ConnLink SC/UPC, SM	SC/UPC	SILVER / GOLD / PLATINUM	G.652D	Yellow	LSZH	Ceramic	~0.9
			G.657A2	Blue			
			G.657B3	Purple			

# PIGTAIL CONNLINK SC/UPC, MM

62.5/125 ITU-T OM1, 50/125 ITU-T OM2/OM3/OM4/OM5 Bend Insensitive

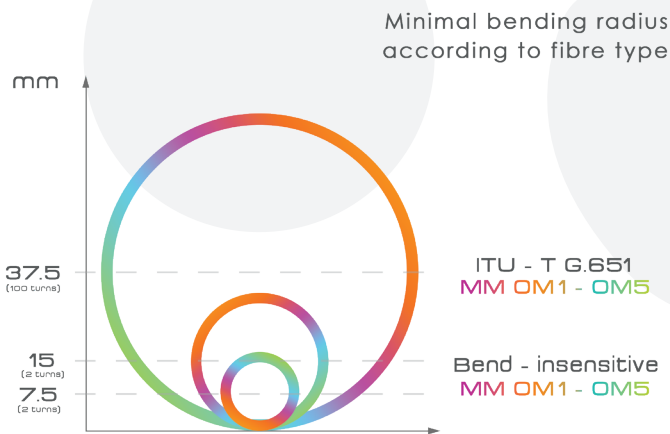


Pigtail ConnLink SC/UPC, MM - high quality multimode pigtail from renowned ConnLink brand. Fiber in 0.25mm clear cover and LSZH jacket (halogen-free, flame retardant and emits limited smoke during burning) with 0.9mm diameter in orange (OM1/OM2) / turquoise (OM3) / pink (OM4) / lime (OM5) color. The ceramic ferrule is ground at right angle (SC/UPC).

Pigtails are mainly used in FTTx installations - the last mile, at the terminations of client cables, as well as in splice closures and distribution boxes for connecting and separating bus cables. Pigtails are covered with a SemiStrip / EasyStrip coating, which allows easy removal, without the need for special tools. Pigtails are compliant with the requirements of PN-EN 61754 standard.

**Available fiber standards:**

- MM OM1 / MM OM2
- MM OM3
- MM OM4
- MM OM5



Impact of the applied bending radius of the fibre on the attenuation

Uncabled fibre macrobending loss	Standard ITU-T / Bend-insensitive by fibre type		
Fibre type	MM OM1-OM5		
Radius (mm)	37.5	15	7.5
Number of turns	100	2	2
Max at 850 nm (dB)	0.5	0.1	0.2
Max at 1300 nm (dB)	0.5	0.3	0.5

TECHNICAL SPECIFICATION	CONNECTOR	SILVER <sub>Class</sub>	GOLD <sub>Class</sub>	PLATINUM <sub>Class</sub>
Max. Insertion losses relative to Master (IEC 61300-3-4) [dB]	SM UPC	≤ 0,30	≤ 0,15	≤ 0,10
	SM APC	≤ 0,30	≤ 0,15	≤ 0,10
	MM PC	≤ 0,30	≤ 0,15	≤ 0,10
Avg. Insertion losses relative to Master (IEC 61300-3-4) [dB]	SM UPC	≤ 0,15	≤ 0,10	≤ 0,08
	SM APC	≤ 0,15	≤ 0,10	≤ 0,08
	MM PC	≤ 0,15	≤ 0,10	≤ 0,08
Reflection losses (IEC 61300-3-6) [dB]	SM UPC	≥ 50	≥ 50	≥ 55
	SM APC	≥ 60	≥ 65	≥ 65
	MM PC	≥ 30	≥ 35	≥ 35
Max. Insertion losses each-to-each (IEC 61300-3-34) [dB]	SM UPC	≤ 0,30	≤ 0,15	≤ 0,10
	SM APC	≤ 0,30	≤ 0,15	≤ 0,10
	MM PC	≤ 0,30	≤ 0,15	≤ 0,10
Insertion losses each-to-each (IEC 61300-3-34) [dB] (mean / 97%)	SM UPC	≤ 0,15 / ≤ 0,30 (97%)	≤ 0,1 / ≤ 0,15 (97%)	≤ 0,08 / ≤ 0,10 (97%)
	SM APC	≤ 0,15 / ≤ 0,30 (97%)	≤ 0,1 / ≤ 0,15 (97%)	≤ 0,08 / ≤ 0,10 (97%)
	MM PC	≤ 0,15 / ≤ 0,30 (97%)	≤ 0,1 / ≤ 0,15 (97%)	≤ 0,08 / ≤ 0,10 (97%)

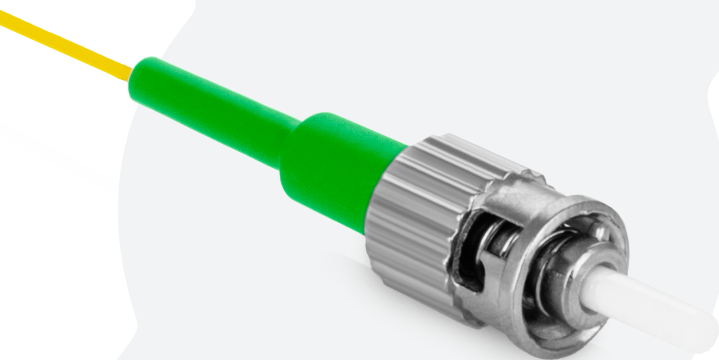
**Product information**

Product name	Connector type	Connector quality class	Fiber standard according to ITU-T	Coating color	Coating material	Ferrule	Cable diameter [mm]
Pigtail ConnLink SC/UPC, MM	SC/UPC	SILVER / GOLD / PLATINUM	OM1/OM2	Orange	LSZH	Ceramic	~0.9
			OM3	Turquoise			
			OM4	Pink			
			OM5	Lime			



# PIGTAIL CONNLINK ST/APC, SM

9/125 ITU-T G.652D/G.657A2/G.657B3



Pigtail ConnLink ST/APC, SM is a high quality single mode pigtail from the renowned ConnLink brand. Fiber in 0.25mm clear cover and LSZH jacket (halogen-free, flame retardant and emits limited smoke during burning) with 0.9mm diameter in yellow (G.652D) / blue (G.657A2) / purple (G.657B3) color. The ceramic ferrule is ground at an angle of 8 degrees (ST/APC).

Pigtails are mainly used in FTTx installations - the last mile, at the terminations of client cables, as well as in splice closures and distribution boxes for connecting and separating bus cables. Pigtails are covered with a SemiStrip / EasyStrip coating, which allows easy removal, without the need for special tools. Pigtails are compliant with the requirements of PN-EN 61754 standard.

**Available fiber standards:**

- SM G.652D
- SM G.657A2
- SM G.657B3

Minimal bending radius according to fibre type



Impact of the applied bending radius of the fibre on the attenuation

Uncabled fibre macrobending loss	ITU-T Standard by fibre type								
	G.657B3		G.657A2/B2			G.657A1		G.652D	
Fibre type	10	7.5	5	15	10	7.5	15	10	30
Radius (mm)	10	7.5	5	15	10	7.5	15	10	30
Number of turns	1	1	1	10	1	1	10	1	100
Max. at 1550 nm (dB)	0.03	0.08	0.15	0.03	0.1	0.5	0.25	0.75	0.1
Max. at 1625 nm (dB)	0.1	0.25	0.45	0.1	0.2	1.0	1.0	1.5	-

TECHNICAL SPECIFICATION	CONNECTOR	SILVER <sub>Class</sub>	GOLD <sub>Class</sub>	PLATINUM <sub>Class</sub>
Max. Insertion losses relative to Master (IEC 61300-3-4) [dB]	SM UPC	≤ 0,30	≤ 0,15	≤ 0,10
	SM APC	≤ 0,30	≤ 0,15	≤ 0,10
	MM PC	≤ 0,30	≤ 0,15	≤ 0,10
Avg. Insertion losses relative to Master (IEC 61300-3-4) [dB]	SM UPC	≤ 0,15	≤ 0,10	≤ 0,08
	SM APC	≤ 0,15	≤ 0,10	≤ 0,08
	MM PC	≤ 0,15	≤ 0,10	≤ 0,08
Reflection losses (IEC 61300-3-6) [dB]	SM UPC	≥ 50	≥ 50	≥ 55
	SM APC	≥ 60	≥ 65	≥ 65
	MM PC	≥ 30	≥ 35	≥ 35
Max. Insertion losses each-to-each (IEC 61300-3-34) [dB]	SM UPC	≤ 0,30	≤ 0,15	≤ 0,10
	SM APC	≤ 0,30	≤ 0,15	≤ 0,10
	MM PC	≤ 0,30	≤ 0,15	≤ 0,10
Insertion losses each-to-each (IEC 61300-3-34) [dB] (mean / 97%)	SM UPC	≤ 0,15 / ≤ 0,30 (97%)	≤ 0,1 / ≤ 0,15 (97%)	≤ 0,08 / ≤ 0,10 (97%)
	SM APC	≤ 0,15 / ≤ 0,30 (97%)	≤ 0,1 / ≤ 0,15 (97%)	≤ 0,08 / ≤ 0,10 (97%)
	MM PC	≤ 0,15 / ≤ 0,30 (97%)	≤ 0,1 / ≤ 0,15 (97%)	≤ 0,08 / ≤ 0,10 (97%)

**Product information**

Product name	Connector type	Connector quality class	Fiber standard according to ITU-T	Coating color	Coating material	Ferrule	Cable diameter [mm]
Pigtail ConnLink ST/APC, SM	ST/APC	SILVER / GOLD / PLATINUM	G.652D	Yellow	LSZH	Ceramic	~0.9
			G.657A2	Blue			
			G.657B3	Purple			

# PIGTAIL CONNLINK ST/UPC, SM

9/125 ITU-T G.652D/G.657A2/G.657B3



Pigtail ConnLink ST/UPC, SM is a high quality single mode pigtail from the renowned ConnLink brand. Fiber in 0.25mm clear cover and LSZH jacket (halogen-free, flame retardant and emits limited smoke during burning) with 0.9mm diameter in yellow (G.652D) / blue (G.657A2) / purple (G.657B3) color. The ceramic ferrule is ground at right angle (ST/UPC).

Pigtails are mainly used in FTTx installations - the last mile, at the terminations of client cables, as well as in splice closures and distribution boxes for connecting and separating bus cables. Pigtails are covered with a SemiStrip / EasyStrip coating, which allows easy removal, without the need for special tools. Pigtails are compliant with the requirements of PN-EN 61754 standard.

**Available fiber standards:**

- SM G.652D
- SM G.657A2
- SM G.657B3

Minimal bending radius according to fibre type



Impact of the applied bending radius of the fibre on the attenuation

Uncabled fibre macrobending loss	ITU-T Standard by fibre type								
	G.657B3			G.657A2/B2			G.657A1		G.652D
Fibre type									
Radius (mm)	10	7.5	5	15	10	7.5	15	10	30
Number of turns	1	1	1	10	1	1	10	1	100
Max. at 1550 nm (dB)	0.03	0.08	0.15	0.03	0.1	0.5	0.25	0.75	0.1
Max. at 1625 nm (dB)	0.1	0.25	0.45	0.1	0.2	1.0	1.0	1.5	-

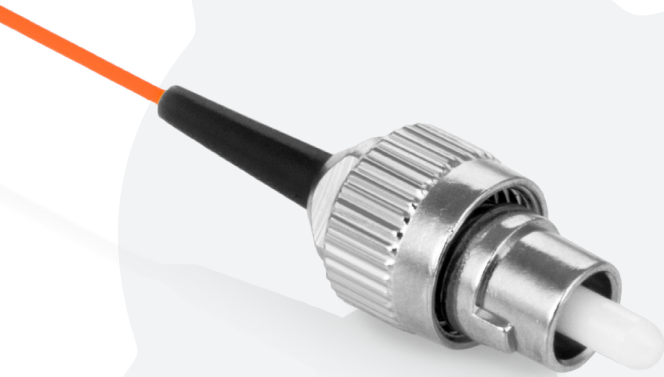
TECHNICAL SPECIFICATION	CONNECTOR	SILVER <sub>Class</sub>	GOLD <sub>Class</sub>	PLATINUM <sub>Class</sub>
Max. Insertion losses relative to Master (IEC 61300-3-4) [dB]	SM UPC	≤ 0,30	≤ 0,15	≤ 0,10
	SM APC	≤ 0,30	≤ 0,15	≤ 0,10
	MM PC	≤ 0,30	≤ 0,15	≤ 0,10
Avg. Insertion losses relative to Master (IEC 61300-3-4) [dB]	SM UPC	≤ 0,15	≤ 0,10	≤ 0,08
	SM APC	≤ 0,15	≤ 0,10	≤ 0,08
	MM PC	≤ 0,15	≤ 0,10	≤ 0,08
Reflection losses (IEC 61300-3-6) [dB]	SM UPC	≥ 50	≥ 50	≥ 55
	SM APC	≥ 60	≥ 65	≥ 65
	MM PC	≥ 30	≥ 35	≥ 35
Max. Insertion losses each-to-each (IEC 61300-3-34) [dB]	SM UPC	≤ 0,30	≤ 0,15	≤ 0,10
	SM APC	≤ 0,30	≤ 0,15	≤ 0,10
	MM PC	≤ 0,30	≤ 0,15	≤ 0,10
Insertion losses each-to-each (IEC 61300-3-34) [dB] (mean / 97%)	SM UPC	≤ 0,15 / ≤ 0,30 (97%)	≤ 0,1 / ≤ 0,15 (97%)	≤ 0,08 / ≤ 0,10 (97%)
	SM APC	≤ 0,15 / ≤ 0,30 (97%)	≤ 0,1 / ≤ 0,15 (97%)	≤ 0,08 / ≤ 0,10 (97%)
	MM PC	≤ 0,15 / ≤ 0,30 (97%)	≤ 0,1 / ≤ 0,15 (97%)	≤ 0,08 / ≤ 0,10 (97%)

**Product information**

Product name	Connector type	Connector quality class	Fiber standard according to ITU-T	Coating color	Coating material	Ferrule	Cable diameter [mm]
Pigtail ConnLink ST/UPC, SM	ST/UPC	SILVER / GOLD / PLATINUM	G.652D	Yellow	LSZH	Ceramic	~0.9
			G.657A2	Blue			
			G.657B3	Purple			

# PIGTAIL CONNLINK ST/UPC, MM

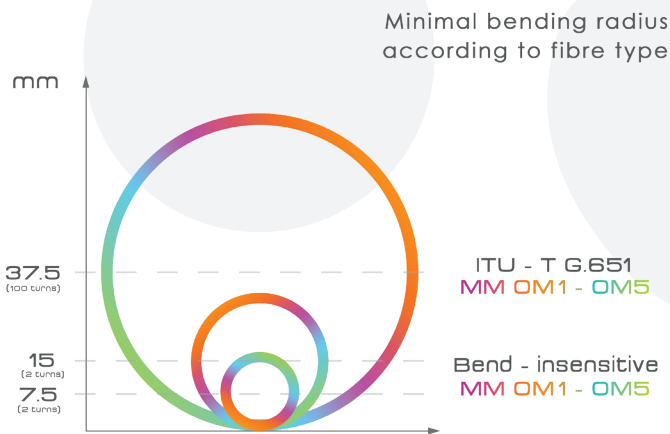
62.5/125 ITU-T OM1, 50/125 ITU-T OM2/OM3/OM4/OM5 Bend Insensitive



Pigtail ConnLink ST/UPC, MM - high quality multimode pigtail from renowned ConnLink brand. Fiber in 0.25mm clear cover and LSZH jacket (halogen-free, flame retardant and emits limited smoke during burning) with 0.9mm diameter in orange (OM1/OM2) / turquoise (OM3) / pink (OM4) / lime (OM5) color. The ceramic ferrule is ground at right angle (ST/UPC).

Pigtails are mainly used in FTTx installations - the last mile, at the terminations of client cables, as well as in splice closures and distribution boxes for connecting and separating bus cables. Pigtails are covered with a SemiStrip / EasyStrip coating, which allows easy removal, without the need for special tools. Pigtails are compliant with the requirements of PN-EN 61754 standard.

**Available fiber standards:**



Impact of the applied bending radius of the fibre on the attenuation

Uncabled fibre macrobending loss	Standard ITU-T / Bend-insensitive by fibre type		
Fibre type	MM OM1-OM5		
Radius (mm)	37.5	15	7.5
Number of turns	100	2	2
Max at 850 nm (dB)	0.5	0.1	0.2
Max at 1300 nm (dB)	0.5	0.3	0.5

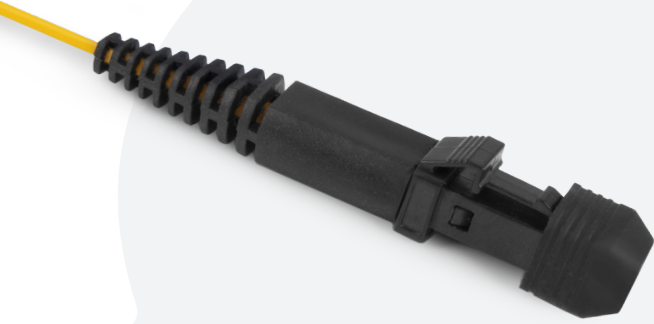
TECHNICAL SPECIFICATION	CONNECTOR	SILVER <sub>Class</sub>	GOLD <sub>Class</sub>	PLATINUM <sub>Class</sub>
Max. Insertion losses relative to Master (IEC 61300-3-4) [dB]	SM UPC	≤ 0,30	≤ 0,15	≤ 0,10
	SM APC	≤ 0,30	≤ 0,15	≤ 0,10
	MM PC	≤ 0,30	≤ 0,15	≤ 0,10
Avg. Insertion losses relative to Master (IEC 61300-3-4) [dB]	SM UPC	≤ 0,15	≤ 0,10	≤ 0,08
	SM APC	≤ 0,15	≤ 0,10	≤ 0,08
	MM PC	≤ 0,15	≤ 0,10	≤ 0,08
Reflection losses (IEC 61300-3-6) [dB]	SM UPC	≥ 50	≥ 50	≥ 55
	SM APC	≥ 60	≥ 65	≥ 65
	MM PC	≥ 30	≥ 35	≥ 35
Max. Insertion losses each-to-each (IEC 61300-3-34) [dB]	SM UPC	≤ 0,30	≤ 0,15	≤ 0,10
	SM APC	≤ 0,30	≤ 0,15	≤ 0,10
	MM PC	≤ 0,30	≤ 0,15	≤ 0,10
Insertion losses each-to-each (IEC 61300-3-34) [dB] (mean / 97%)	SM UPC	≤ 0,15 / ≤ 0,30 (97%)	≤ 0,1 / ≤ 0,15 (97%)	≤ 0,08 / ≤ 0,10 (97%)
	SM APC	≤ 0,15 / ≤ 0,30 (97%)	≤ 0,1 / ≤ 0,15 (97%)	≤ 0,08 / ≤ 0,10 (97%)
	MM PC	≤ 0,15 / ≤ 0,30 (97%)	≤ 0,1 / ≤ 0,15 (97%)	≤ 0,08 / ≤ 0,10 (97%)

**Product information**

Product name	Connector type	Connector quality class	Fiber standard according to ITU-T	Coating color	Coating material	Ferrule	Cable diameter [mm]
Pigtail ConnLink ST/UPC, MM	ST/UPC	SILVER / GOLD / PLATINUM	OM1/OM2	Orange	LSZH	Ceramic	~0.9
			OM3	Turquoise			
			OM4	Pink			
			OM5	Lime			

# PIGTAIL CONNLINK MTRJ, SM

9/125 ITU-T G.652D/G.657A2/G.657B3

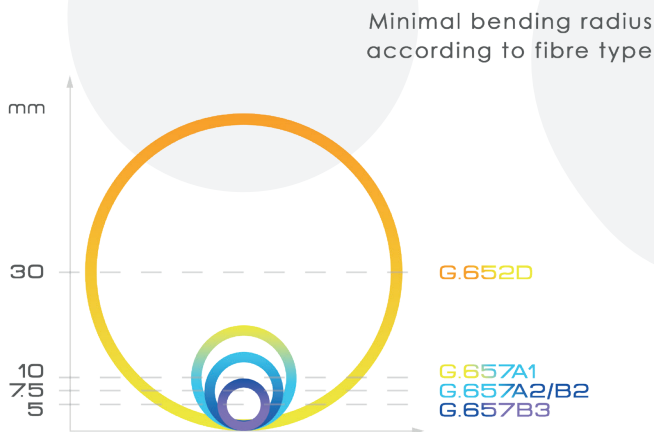


Pigtail ConnLink MTRJ, SM is a high quality single mode pigtail from the renowned ConnLink brand. Fiber in 0.25mm clear cover and LSZH jacket (halogen-free, flame retardant and emits limited smoke during burning) with 0.9mm diameter in yellow (G.652D) / blue (G.657A2) / purple (G.657B3) color. MTRJ connectors are available in male version - with pins, and female version - with holes for pins. As a standard, they are in the female version.

Pigtails are mainly used in FTTx installations - the last mile, at the terminations of client cables, as well as in splice closures and distribution boxes for connecting and separating bus cables. Pigtails are covered with a SemiStrip / EasyStrip coating, which allows easy removal, without the need for special tools. Pigtails are compliant with the requirements of PN-EN 61754 standard.

**Available fiber standards:**

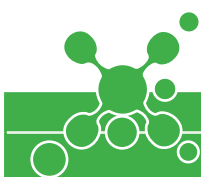
- SM G.652D
- SM G.657A2
- SM G.657B3



**Impact of the applied bending radius of the fibre on the attenuation**

Uncabled fibre macrobending loss	ITU-T Standard by fibre type								
	G.657B3			G.657A2/B2			G.657A1		G.652D
Fibre type									
Radius (mm)	10	7.5	5	15	10	7.5	15	10	30
Number of turns	1	1	1	10	1	1	10	1	100
Max. at 1550 nm (dB)	0.03	0.08	0.15	0.03	0.1	0.5	0.25	0.75	0.1
Max. at 1625 nm (dB)	0.1	0.25	0.45	0.1	0.2	1.0	1.0	1.5	-

TECHNICAL SPECIFICATION	CONNECTOR	SILVER <sub>Class</sub>	GOLD <sub>Class</sub>	PLATINUM <sub>Class</sub>
Max. Insertion losses relative to Master (IEC 61300-3-4) [dB]	SM UPC	≤ 0,30	≤ 0,15	≤ 0,10
	SM APC	≤ 0,30	≤ 0,15	≤ 0,10
	MM PC	≤ 0,30	≤ 0,15	≤ 0,10
Avg. Insertion losses relative to Master (IEC 61300-3-4) [dB]	SM UPC	≤ 0,15	≤ 0,10	≤ 0,08
	SM APC	≤ 0,15	≤ 0,10	≤ 0,08
	MM PC	≤ 0,15	≤ 0,10	≤ 0,08
Reflection losses (IEC 61300-3-6) [dB]	SM UPC	≥ 50	≥ 50	≥ 55
	SM APC	≥ 60	≥ 65	≥ 65
	MM PC	≥ 30	≥ 35	≥ 35
Max. Insertion losses each-to-each (IEC 61300-3-34) [dB]	SM UPC	≤ 0,30	≤ 0,15	≤ 0,10
	SM APC	≤ 0,30	≤ 0,15	≤ 0,10
	MM PC	≤ 0,30	≤ 0,15	≤ 0,10
Insertion losses each-to-each (IEC 61300-3-34) [dB] (mean / 97%)	SM UPC	≤ 0,15 / ≤ 0,30 (97%)	≤ 0,1 / ≤ 0,15 (97%)	≤ 0,08 / ≤ 0,10 (97%)
	SM APC	≤ 0,15 / ≤ 0,30 (97%)	≤ 0,1 / ≤ 0,15 (97%)	≤ 0,08 / ≤ 0,10 (97%)
	MM PC	≤ 0,15 / ≤ 0,30 (97%)	≤ 0,1 / ≤ 0,15 (97%)	≤ 0,08 / ≤ 0,10 (97%)



**Product information**

Product name	Connector type	Connector quality class	Fiber standard according to ITU-T	Coating color	Coating material	Ferrule	Cable diameter [mm]
Pigtail ConnLink MTRJ, SM	MTRJ	SILVER / GOLD / PLATINUM	G.652D	Yellow	LSZH	Ceramic	~0.9
			G.657A2	Blue			
			G.657B3	Purple			



## FIBER OPTIC PIGTAILS

# PIGTAIL CONNLINK MTRJ, MM

62.5/125 ITU-T OM1, 50/125 ITU-T OM2/OM3/OM4/OM5 Bend Insensitive

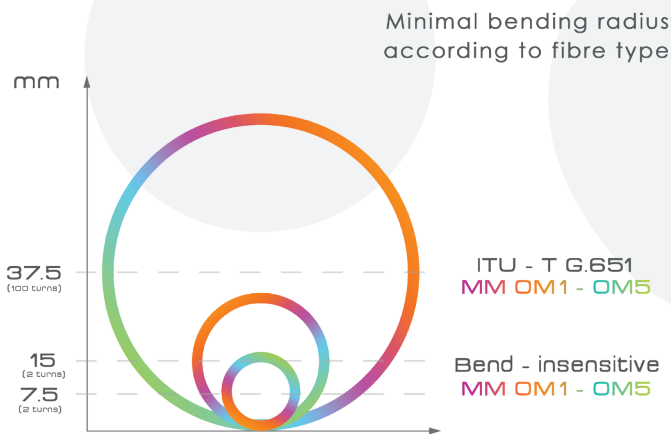


Pigtail ConnLink MTRJ, MM - high quality multimode pigtail from renowned ConnLink brand. Fiber in 0.25mm clear cover and LSZH jacket (halogen-free, flame retardant and emits limited smoke during burning) with 0.9mm diameter in orange (OM1/OM2) / turquoise (OM3) / pink (OM4) / lime (OM5) color. MTRJ connectors are available in male version - with pins, and female version - with holes for pins. As a standard, they are in the female version.

Pigtails are mainly used in FTTx installations - the last mile, at the terminations of client cables, as well as in splice closures and distribution boxes for connecting and separating bus cables. Pigtails are covered with a SemiStrip / EasyStrip coating, which allows easy removal, without the need for special tools. Pigtails are compliant with the requirements of PN-EN 61754 standard.

### Available fiber standards:

MM OM1 / MM OM2	
MM OM3	
MM OM4	
MM OM5	



### Impact of the applied bending radius of the fibre on the attenuation

Uncabled fibre macrobending loss	Standard ITU-T / Bend-insensitive by fibre type		
Fibre type	MM OM1-OM5		
Radius (mm)	37.5	15	7.5
Number of turns	100	2	2
Max at 850 nm (dB)	0.5	0.1	0.2
Max at 1300 nm (dB)	0.5	0.3	0.5

TECHNICAL SPECIFICATION	CONNECTOR	SILVER <sub>Class</sub>	GOLD <sub>Class</sub>	PLATINUM <sub>Class</sub>
Max. Insertion losses relative to Master (IEC 61300-3-4) [dB]	SM UPC	≤ 0,30	≤ 0,15	≤ 0,10
	SM APC	≤ 0,30	≤ 0,15	≤ 0,10
	MM PC	≤ 0,30	≤ 0,15	≤ 0,10
Avg. Insertion losses relative to Master (IEC 61300-3-4) [dB]	SM UPC	≤ 0,15	≤ 0,10	≤ 0,08
	SM APC	≤ 0,15	≤ 0,10	≤ 0,08
	MM PC	≤ 0,15	≤ 0,10	≤ 0,08
Reflection losses (IEC 61300-3-6) [dB]	SM UPC	≥ 50	≥ 50	≥ 55
	SM APC	≥ 60	≥ 65	≥ 65
	MM PC	≥ 30	≥ 35	≥ 35
Max. Insertion losses each-to-each (IEC 61300-3-34) [dB]	SM UPC	≤ 0,30	≤ 0,15	≤ 0,10
	SM APC	≤ 0,30	≤ 0,15	≤ 0,10
	MM PC	≤ 0,30	≤ 0,15	≤ 0,10
Insertion losses each-to-each (IEC 61300-3-34) [dB] (mean / 97%)	SM UPC	≤ 0,15 / ≤ 0,30 (97%)	≤ 0,1 / ≤ 0,15 (97%)	≤ 0,08 / ≤ 0,10 (97%)
	SM APC	≤ 0,15 / ≤ 0,30 (97%)	≤ 0,1 / ≤ 0,15 (97%)	≤ 0,08 / ≤ 0,10 (97%)
	MM PC	≤ 0,15 / ≤ 0,30 (97%)	≤ 0,1 / ≤ 0,15 (97%)	≤ 0,08 / ≤ 0,10 (97%)

### Product information

Product name	Connector type	Connector quality class	Fiber standard according to ITU-T	Coating color	Coating material	Ferrule	Cable diameter [mm]
Pigtail ConnLink MTRJ, MM	MTRJ	SILVER / GOLD / PLATINUM	OM1/OM2	Orange	LSZH	Ceramic	~0.9
			OM3	Turquoise			
			OM4	Pink			
			OM5	Lime			







**xbest.pl Sp. z o.o.**

**Headquarters: 00-807 Warszawa, Al. Jerozolimskie 96**  
**Branch: 44-200 Rybnik, ul. Św. Józefa 141D**

**Phone: +48 32 239 6000, +48 32 239 6001, Fax. +48 32 239 6010**  
**TAX ID: 642-318-10-41, Registry ID: 243085940**

**www.xbest.pl**  
**e-mail: office@xbest.pl**