

Fiber optic accessories

PRODUCT CATALOG

TYCON

The logo features the word "TYCON" in a white, sans-serif font, centered within a large circle. The circle is composed of a series of small white dots, creating a dotted border. The background is a solid blue color.

TYCON

Table of contents

FIBER OPTIC ACCESSORIES

FIBER OPTIC CLOSURES	6
Tycon 400 fiber optic closure A4-T-000 144J-06xS M2-000	7
Tycon 400 fiber optic closure A8-T-000 096J-04xS A8-000	8
Tycon 400 fiber optic closure A8-T-24S 072J-03xS A8-000	9
Tycon 400 fiber optic closure B4 (max: 144J - 6xA lub 6xB)	10
Tycon 400 fiber optic closure B4-D-24S 072J-03xA/B M2-B26	11
Tycon 400 fiber optic closure B4-T-000 096J-04xA/B M2-B26	12
Tycon 400 fiber optic closure B4-T-000 144J-06xA/B M2-000	13
Tycon 400 fiber optic closure B4-T-000 144J-06xA/B M2-B23	14
Tycon 400 fiber optic closure B4-T-12S 096J-04xA/B M8-B28	15
Tycon 400 fiber optic closure B5-T-000 216J-09xA M2-B26	16
Tycon 400 fiber optic closure B5-T-000 216J-09xA M8-B26	17
Tycon 400 fiber optic closure B5-T-06S 168J-07xA/B M2-B38	18
Tycon 400 fiber optic closure B5-T-12S 144J-06xA/B M8-B38	19
Tycon 400 fiber optic closure B5-T-12S 216J-09xA/B M8-B13	20
Tycon 400 fiber optic closure B8-T-000 096J-04xA/B A8-000	21
Tycon 400 fiber optic closure D5-T-000 432J-06xC M4-B52	22
Tycon 400 fiber optic closure D5-T-000 576J-08xC M4-B27	23
Tycon 450 fiber optic closure B4-D-000 144J-06xE M8-B29	24
Tycon 450 fiber optic closure B4-D-24S 120J-05xE M8-B21	25
Tycon 450 fiber optic closure B4-T-000 144J-06xE M8-B29	26
Tycon 500 fiber optic closure B16-T-000 096J-08xD12F M5-000	27
Tycon 500 fiber optic closure B16-T-000 128J-16xD-1slot M5-000	28
Tycon 500 fiber optic closure C16-T-48S 192J-24xD-1slot M5-000	29
Tycon 500 fiber optic closure C16-T-000 384J-48xD-1slot M5-000	30
Tycon 500 fiber optic closure C6-T-000 384J-48xD-1slot M5-000	31
Tycon 500 fiber optic closure C6-T-48S 192J-24xD-1slot M5-000	32
Tycon 500 fiber optic closure C8-D-000 256J-32xD-1slot A8-B29	33
Tycon 500 fiber optic closure F6-T-14S 192J-24xD-1slot M5-000	34
Tycon 500 fiber optic closure F6-D-14S 192J-24xD-1slot M5-000	35
Tycon fiber optic closure B6-T-000 128J-16xD-1slot M5-000	36
Tycon fiber optic closure Tycon D16-T-000 800J-100xD-1slot M5-000	37
Tycon INLINE H20 in-line fiber optic closure (max: 42J)	38
Tycon INLINE H25 in-line fiber optic closure (max: 24J)	39
Tycon INLINE H38 in-line fiber optic closure (12/24J)	40
Tycon OPGW fiber optic closure	41
Tycon HSS telecommunications closure	42

SEALING ACCESSORIES 43

Tycon heat-shrink sleeve	44
Tycon sealing kit	45
Mechanical sealing for round port of Tycon 500 C6 closure, for 6 cables up to 8.3 mm	46
Heat-shrink sleeve for branch port, 20 cm/60 mm	46
Heat-shrink sleeve for branch port, 20 cm/80 mm	46
BOKT cable branch-off clip.	47

FIBER OPTIC SPLICE TRAYS 48

Tycon A1-24F fiber optic splice tray [1x24F]	49
Tycon B1-24F fiber optic splice tray [1x24F]	49
Tycon B2-24F fiber optic splice tray [1x24F]	49
Tycon C1-72F fiber optic splice tray [1x72F]	50
Tycon D1-1S-04F fiber optic splice tray [1x4F]	50
Tycon D1-1S-08F fiber optic splice tray [1x8F] SPLITTER	50
Tycon D1-2S-12F fiber optic splice tray [2x6F]	51
Tycon D1-2S-16F fiber optic splice tray [2x8F]	51
Tycon E1-24F fiber optic splice tray [1x24F]	51
Tycon S1-24F fiber optic splice tray [1x24F]	52
Mounting bracket for tray A for Tycon 400 B4/B5 closures	52

FIBER OPTIC CABINETS 53

Tycon FTTH pole-mounted cabinet for closure	54
Tycon TOC-32U outdoor RACK cabinet	55
Tycon TOC-32U outdoor RACK cabinet with ETP48200-C5B6 power system	56
Tycon TOC-42U outdoor RACK cabinet	57
Pedestal for Tycon TOC cabinets PED-TOC-0600/0700/0820-SS201	59



Fiber optic
closures

TYCON

TYCON 400 FIBER OPTIC CLOSURE

A4-T-000 144J-06xS M2-000

TN-FOSC-400-A4S1



The closure is equipped with fully hermetic, heat-shrinkable inlet/outlet ports. It is used to protect fiber optic cable splices and for branching applications. Fiber management inside the closure is facilitated by fiber optic splice trays, which can be purchased separately. The housing is made of high-quality plastic resistant to UV radiation, low (-40°C) and high (+60°C) temperatures, as well as chemical substances, making it suitable for aerial, duct, and direct-buried installations. It has an IP68 protection rating.

The closure is designed for simple and efficient installation. All metal components are made of corrosion-resistant materials.

The closure is also equipped with a grounding port and a pressure test valve installed in the dome of the closure.

The set includes:

- Bracket for mounting the closure on a pole/wall/other structure
- Heat-shrink sealing tapes for cable entry ports
- 40 mm splice protection sleeves
- Fiber distribution tubes
- Self-adhesive aluminum tape for cable protection during heat-shrink sealing
- Sandpaper
- Paper labels
- Self-adhesive tape
- Grounding cables

Accessories to be purchased separately:

- Tycon S1 fiber optic splice trays

Technical Data

Product name	Height (dome Ø/ mounting Ø) [mm]	IP protection rating	Splice tray (spli- ces)	Max. splice capacity (trays)	Max. adapters	GCC*/ Grounding	Sealing	Ports [mm]	
								Round	Oval
Tycon 400 fiber optic closure A4-T-000 144J-06xS M2-000	420.0 (140.0/205.0)	IP68	S1 (24)	144 (6)	None	Yes / Yes	Heat-shrinkable	4x (Ø19.0)	1x (40.0 × 62.0)

* GCC: grounding cable connection

TYCON 400 FIBER OPTIC CLOSURE

A8-T-000 096J-04xS A8-000

TN-FOSC-400-A8-S1



The closure is equipped with fully hermetic, heat-shrinkable inlet/outlet ports. It is used to protect fiber optic cable splices and for branching applications. Fiber management inside the closure is facilitated by fiber optic splice trays, which can be purchased separately. The housing is made of high-quality plastic resistant to UV radiation, low (-40°C) and high (+60°C) temperatures, as well as chemical substances, making it suitable for aerial, duct, and direct-buried installations. It has an IP68 protection rating.

The closure is designed for simple and efficient installation. All metal components are made of corrosion-resistant materials.

The closure is also equipped with a grounding port and a pressure test valve installed in the dome of the closure.



The set includes:

- Bracket for mounting the closure on a pole/wall/other structure
- Heat-shrink sealing tapes for cable entry ports
- 40 mm splice protection sleeves
- Fiber distribution tubes
- Self-adhesive aluminum tape for protecting the cable during heat-shrinking of heat-shrink tubes
- Sandpaper
- Grounding cables

Accessories to be purchased separately:

- Tycon S1 fiber optic splice trays



Technical Data

Product name	Height (dome Ø/ mounting Ø) [mm]	IP protection rating	Splice tray (spli- ces)	Max. splice capacity (trays)	Max. adapters	GCC*/ Grounding	Sealing	Ports [mm]	
								Round	Oval
Tycon 400 fiber optic closure A8-T-000 096J-04xS A8-000	410.0 (140.0/205.0)	IP68	S1 (24)	96 (4)	None	Yes / Yes	Heat-shrin- kable	8x (Ø11.0)	1x (37.0 × 59.0)

* GCC: grounding cable connection

TYCON 400 FIBER OPTIC CLOSURE

A8-T-24S 072J-03xS A8-000

TN-FOSC-400-A8-24S



The closure is equipped with fully hermetic, heat-shrinkable inlet/outlet ports. It was designed based on the construction of the Tycon 400 fiber optic closure A8-T-000 096J-04xS A8-000. It is extended with an integrated patch panel, allowing the installation of up to 24 fiber optic adapters in SC Simplex format (or LC Duplex format). By using the patch panel with SC Simplex adapters, installation time and costs can be significantly reduced.

The closure is used to protect fiber optic cable splices and for branching applications. Fiber management inside the closure is facilitated by fiber optic splice trays, which can be purchased separately. The housing is made of high-quality plastic, resistant to UV radiation, low (-40°C) and high (+60°C) temperatures, as well as chemical substances, making it suitable for aerial, duct, and direct-buried installations. It has an IP68 protection rating. All metal components are made of corrosion-resistant materials.

The closure is also equipped with a grounding port and a pressure test valve installed in the dome of the closure.

The set includes:

- Bracket for mounting the closure on a pole/wall/other structure
- Heat-shrinkable tubes for sealing cable entry ports
- 40 mm splice protection sleeves
- Protective tubes for fiber distribution
- Self-adhesive aluminum tape for protecting the cable during heat-shrinking of heat-shrink tubes
- Sandpaper
- Cleaning wipes
- Grounding cables

Accessories to be purchased separately:

- Tycon S1 fiber optic splice trays

Technical Data

Product name	Height (dome Ø/ mounting Ø) [mm]	IP protection rating	Splice tray (spli- ces)	Max. splice capacity (trays)	Max. adapters	GCC*/ Grounding	Sealing	Ports [mm]	
								Round	Oval
Tycon 400 fiber optic closure A8-T-24S 072J-03xS A8-000	410.0 (152.0/205.0)	IP68	S1 (24)	72 (3)	24x SC SX	Yes / Yes	Heat-shrin- kable	8x (Ø11.0)	1x (37.0 × 59.0)

* GCC: grounding cable connection

TYCON 400 FIBER OPTIC CLOSURE B4

(MAX: 144J - 6xA LUB 6xB)

TN-FOSC-400-B4-BA



The closure is equipped with fully hermetic, heat-shrinkable inlet/outlet ports. It is used to protect fiber optic cable splices and for branching applications. Fiber management inside the closure is facilitated by fiber optic splice trays, which can be purchased separately. The housing is made of high-quality plastic resistant to UV radiation, low (-40°C) and high (+60°C) temperatures, as well as chemical substances, making it suitable for aerial, duct, and direct-buried installations.

It has an IP68 protection rating. The closure is designed for simple and efficient installation. All metal components are made of corrosion-resistant materials.

The closure is also equipped with a grounding port and a pressure test valve installed in the dome of the closure.

The set includes:

- Heat-shrink sealing tapes for cable entry ports
- Splice protection sleeves
- Fiber distribution tubes
- Self-adhesive aluminum tape for cable protection during heat-shrink sealing
- Sandpaper
- Paper labels
- Self-adhesive tape
- Grounding cables

Accessories to be purchased separately:

- Tycon A1/B1 fiber optic splice trays

Technical Data

Product name	Height (dome Ø/ mounting Ø) [mm]	IP protection rating	Splice tray (spli- ces)	Max. splice capacity (trays)	Max. adapters	GCC*/ Grounding	Sealing	Ports [mm]	
								Round	Oval
Tycon 400 fiber optic closure B4 (max: 144J - 6xA lub 6xB)	530.0 (144.0/205.0)	IP68	A/B (24)	144 (6)	None	Yes / Yes	Heat-shrin- kable	4x (Ø19.0)	1x (40.0 × 62.0)

* GCC: grounding cable connection

TYCON 400 FIBER OPTIC CLOSURE

B4-D-24S 072J-03xA/B M2-B26

TN-FOSC-400-B4-D-24S



The closure is equipped with fully hermetic mechanical inlet/outlet ports (sealed using the included dedicated grommets). It is used to protect fiber optic cable splices and for branching applications. Fiber management inside the closure is facilitated by fiber optic splice trays, which can be purchased separately. The housing is made of high-quality plastic, resistant to UV radiation, low (-40°C) and high (+60°C) temperatures, as well as chemical substances, making it suitable for aerial, duct, and direct-buried installations.

It has an IP68 protection rating. The closure is designed for simple and efficient installation. All metal components are made of corrosion-resistant materials.

The Tycon 400 B4-D-24S 072J-03xA/B M2-B26 closure was designed based on the proven and popular Tycon 400 B4 fiber optic closure (144): A x6 or B x6). Unlike its predecessor, its capacity has been reduced by half (space for 72 splices in three Tycon A1/B1 splice trays), allowing the closure to be equipped with a tube basket and an integrated patch panel capable of holding up to 24 SC Simplex fiber adapters. Using the closure's mechanically sealed cable ports, a pre-terminated (ready-to-use) cable can be inserted and connected directly to the adapter, significantly reducing installation time and costs. The closure also includes a shelf capable of holding optical splitters in an STEEL enclosure, as well as a grounding port and a pressure test valve installed in the dome of the closure.

The set includes:

- Bracket for mounting the closure on a pole/wall/other structure
- Grommets for sealing cable entry ports and a gland key
- 60 mm splice protection sleeves
- Protective tubes for fiber distribution
- Sandpaper
- Grounding cables
- Cleaning wipes

Accessories to be purchased separately:

- Tycon A1/B1 fiber optic splice trays

Technical Data

Product name	Height (dome Ø/ mounting Ø) [mm]	IP protection rating	Splice tray (spli- ces)	Max. splice capacity (trays)	Max. adapters	GCC*/ Grounding	Sealing	Ports [mm]	
								Round	Oval
Tycon 400 fiber optic closure B4-D-24S 072J-03xA/B M2-B26	540.0 (144.0/205.0)	IP68	A / B (24)	72 (3)	24x SC SX	Yes / Yes	Mechanical	4x (Ø15.0) 1x (Ø40.0)	-

* GCC: grounding cable connection

TYCON 400 FIBER OPTIC CLOSURE

B4-T-000 096J-04xA/B M2-B26

TN-FOSC-400-B4+BR



The closure is equipped with fully hermetic, heat-shrinkable inlet/outlet ports. It is used to protect fiber optic cable splices and for branching applications. Fiber management inside the closure is facilitated by fiber optic splice trays, which can be purchased separately. The closure housing is made of high-quality plastic, resistant to UV radiation, low (-40°C) and high (+60°C) temperatures, as well as chemical substances, making it suitable for aerial, duct, and direct-buried installations.. It has an IP68 protection rating.

The closure is designed for simple and efficient installation. All metal components are made of corrosion-resistant materials.

The closure is also equipped with a grounding port and a pressure test valve installed in the dome of the closure.

The set includes:

- Bracket for mounting the closure on a pole/wall/other structure
- Heat-shrink sealing tapes for cable entry ports
- Splice protection sleeves
- Fiber distribution tubes
- Self-adhesive aluminum tape for protecting the cable during heat-shrinking of heat-shrink tape
- Sandpaper
- Self-adhesive tape
- Grounding cables

Accessories to be purchased separately:

- Tycon A1/B1 fiber optic splice trays

Technical Data

Product name	Height (dome Ø/ mounting Ø) [mm]	IP protection rating	Splice tray (spli- ces)	Max. splice capacity (trays)	Basket depth [mm]	GCC*/ Grounding	Sealing	Ports [mm]	
								Round	Oval
Tycon 400 fiber optic closure B4-T-000 096J-04xA/B M2-B26	530.0 (151.0/205.0)	IP 68	A/B (24)	96 (4)	26	Yes / Yes	Heat-shrin- kable	4x (Ø24.0)	1x (61.0 × 36.0)

* GCC: grounding cable connection

TYCON 400 FIBER OPTIC CLOSURE**B4-T-000 144J-06xA/B M2-000**

TN-FOSC-400-B4



The closure is equipped with fully hermetic, heat-shrinkable inlet/outlet ports. It is used to protect fiber optic cable splices and for branching applications. Fiber management inside the closure is facilitated by fiber optic splice trays, which can be purchased separately.

The closure housing is made of high-quality plastic, resistant to UV radiation, low (-40°C) and high (+60°C) temperatures, as well as chemical substances, making it suitable for aerial, duct, and direct-buried installations. It has an IP68 protection rating.

The closure is designed for simple and efficient installation. All metal components are made of corrosion-resistant materials.

The closure is also equipped with a grounding port and a pressure test valve installed in the dome of the closure.

The set includes:

- Bracket for mounting the closure on a pole/wall/other structure
- Heat-shrink sealing tapes for cable entry ports
- Splice protection sleeves
- Fiber distribution tubes
- Self-adhesive aluminum tape for protecting the cable during heat-shrinking of heat-shrink tape
- Sandpaper
- Paper labels
- Self-adhesive tape
- Grounding cables

Accessories to be purchased separately:

- Tycon A1/B1 fiber optic splice trays

Technical Data

Product name	Height (dome Ø/ mounting Ø) [mm]	IP protec- tion rating	Splice tray (splices)	Max. splice capacity (trays)	GCC*/ Grounding	Sealing	Ports [mm]	
							Round	Oval
Tycon 400 fiber optic closure B4-T-000 144J-06xA/B M2-000	530.0 (151.0/205.0)	IP 68	A/B (24)	144* (6)	Yes / Yes	Heat-shrinkable	4x (Ø24.0)	1x (61.0 × 36.0)

* GCC: grounding cable connection

TYCON 400 FIBER OPTIC CLOSURE

B4-T-000 144J-06xA/B M2-B23

TN-FOSC-400-B4+BRV2



The closure is equipped with fully hermetic, heat-shrinkable inlet/outlet ports. It is used to protect fiber optic cable splices and for branching applications. Fiber management inside the closure is facilitated by fiber optic splice trays, which can be purchased separately. The basket allows the installation of two splitters (1×8 STEEL and 1×16 STEEL).

The closure housing is made of high-quality plastic, resistant to UV radiation, low (-40°C) and high (+60°C) temperatures, as well as chemical substances, making it suitable for aerial, duct, and direct-buried installations. It has an IP68 protection rating.

The closure is designed for simple and efficient installation. All metal components are made of corrosion-resistant materials.

The closure is also equipped with a grounding port and a pressure test valve installed in the dome of the closure.

The set includes:

- Bracket for mounting the closure on a pole/wall/other structure
- Heat-shrink sealing tapes for cable entry ports
- Splice protection sleeves
- Fiber distribution tubes
- Self-adhesive aluminum tape for protecting the cable during heat-shrinking of heat-shrink tape
- Sandpaper
- Self-adhesive tape
- Grounding cables

Accessories to be purchased separately:

- Tycon A1/B1 fiber optic splice trays

Technical Data

Product name	Height (dome Ø/ mounting Ø) [mm]	IP protection rating	Splice tray (spli- ces)	Max. splice capacity (trays)	Basket depth [mm]	GCC*/ Grounding	Sealing	Ports [mm]	
								Round	Oval
Tycon 400 fiber optic closure B4-T-000 144J-06xA/B M2-B23	530.0 (151.0/205.0)	IP 68	A/B (24)	144 (6)	23	Yes / Yes	Heat-shrinkable	4x (Ø24.0)	1x (61.0 × 36.0)

* GCC: grounding cable connection

TYCON 400 FIBER OPTIC CLOSURE

B4-T-12S 096J-04xA/B M8-B28

TN-FOSC400B4096BR28



The closure is equipped with fully hermetic, heat-shrinkable inlet/outlet ports. It is used to protect fiber optic cable splices and for branching applications. The housing is made of high-quality plastic resistant to UV radiation, low (-40°C) and high (+60°C) temperatures, as well as chemical substances, making it suitable for aerial, duct, and direct-buried installations. It has an IP68 protection rating.

The closure is equipped with a panel capable of accommodating 12 SC Simplex adapters. Fiber management is facilitated by fiber optic splice trays, which can be purchased separately.

The closure is designed for simple and efficient installation. It includes a grounding port and a pressure test valve installed in the dome of the closure. All metal components are made of corrosion-resistant materials.

The set includes:

- Bracket for mounting the closure on a pole/wall/other structure
- Panel na adaptery 12x SC Simplex
- Heat-shrink sealing tapes for cable entry ports
- Splice protection sleeves
- Fiber distribution tubes
- Self-adhesive aluminum tape for protecting the cable during heat-shrinking of heat-shrink tape
- Sandpaper
- Paper labels
- Self-adhesive tape
- Grounding cables

Accessories to be purchased separately:

- Tycon A1/B1 fiber optic splice trays

Technical Data

Product name	Height (dome Ø/ mounting Ø) [mm]	IP protection rating	Splice tray (spli- ces)	Max. splice capacity (trays)	Max. adapt- ers	Basket depth [mm]	GCC*/ Ground- ing	Sealing	Ports [mm]	
									Round	Oval
Tycon 400 fiber optic closure B4-T-12S 096J-04xA/B M8-B28	530.0 (151.0/205.0)	IP68	A/B (24)	96 (4)	12 SC Simplex	28	Yes / Yes	Heat-shrinkable	4x (Ø24.0)	1x (61.0 × 36.0)

* GCC: grounding cable connection

TYCON 400 FIBER OPTIC CLOSURE

B5-T-000 216J-09xA M2-B26

TN-FOSC-400-B5-A



The closure is equipped with fully hermetic, heat-shrinkable inlet/outlet ports. It is used to protect fiber optic cable splices and for branching applications. Fiber management inside the closure is facilitated by fiber optic splice trays, which can be purchased separately. The housing is made of high-quality plastic resistant to UV radiation, low (-40°C) and high (+60°C) temperatures, as well as chemical substances, making it suitable for aerial, duct, and direct-buried installations. It has an IP68 protection rating.

The closure is designed for simple and efficient installation. It includes a grounding port and a pressure test valve installed in the dome of the closure. All metal components are made of corrosion-resistant materials.



The set includes:

- Bracket for mounting the closure on a pole/wall/other structure
- Heat-shrink sealing tapes for cable entry ports
- Splice protection sleeves
- Fiber distribution tubes
- Self-adhesive aluminum tape for protecting the cable during heat-shrinking of heat-shrink tape
- Sandpaper
- Paper labels
- Self-adhesive tape
- Grounding cables

Accessories to be purchased separately:

- Tycon A1 fiber optic splice trays



Technical Data

Product name	Height (dome Ø/ mounting Ø) [mm]	IP protection rating	Splice tray (spli- ces)	Max. splice capacity (trays)	Basket depth [mm]	GCC*/ Grounding	Sealing	Ports [mm]	
								Round	Oval
Tycon 400 fiber optic closure B5-T-000 216J-09xA M2-B26	575.0 (180.0/235.0)	IP68	A (24)	216 (9)	26	Yes / Yes	Heat-shrinkable	5x (Ø21.0)	1x (81.0 × 47.0)

* GCC: grounding cable connection

TYCON 400 FIBER OPTIC CLOSURE

B5-T-000 216J-09xA M8-B26

TN-FOSC400B5216BR26



The closure is equipped with fully hermetic, heat-shrinkable inlet/outlet ports. It is used to protect fiber optic cable splices and for branching applications. Fiber management inside the closure is facilitated by fiber optic splice trays, which can be purchased separately. The housing is made of high-quality plastic resistant to UV radiation, low (-40°C) and high (+60°C) temperatures, as well as chemical substances, making it suitable for aerial, duct, and direct-buried installations. It has an IP68 protection rating.

The closure is designed for simple and efficient installation. It includes a grounding port and a pressure test valve installed in the dome of the closure. All metal components are made of corrosion-resistant materials.



The set includes:

- Bracket for mounting the closure on a pole/wall/other structure
- Heat-shrink sealing tapes for cable entry ports
- Splice protection sleeves
- Fiber distribution tubes
- Self-adhesive aluminum tape for protecting the cable during heat-shrinking of heat-shrink tape
- Sandpaper
- Paper labels
- Self-adhesive tape
- Grounding cables

Accessories to be purchased separately:

- Tycon A1 fiber optic splice trays



Technical Data

Product name	Height (dome Ø/ mounting Ø) [mm]	IP protection rating	Splice tray (spli- ces)	Max. splice capacity (trays)	Basket depth [mm]	GCC*/ Grounding	Sealing	Ports [mm]	
								Round	Oval
Tycon 400 fiber optic closure B5-T-000 216J-09xA M8-B26	575.0 (184.0/245.0)	IP68	A (24)	216 (9)	26	Yes / Yes	Heat-shrinkable	5x (Ø21.0)	1x (78.0 × 43.0)

* GCC: grounding cable connection

TYCON 400 FIBER OPTIC CLOSURE

B5-T-06S 168J-07xA/B M2-B38

TN-FOSC-400-B5+BBR



The closure is equipped with fully hermetic, heat-shrinkable inlet/outlet ports. It is used to protect fiber optic cable splices and for branching applications. The housing is made of high-quality plastic resistant to UV radiation, low (-40°C) and high (+60°C) temperatures, as well as chemical substances, making it suitable for aerial, duct, and direct-buried installations. It has an IP68 protection rating.

The closure is equipped with a panel capable of holding 6 SC Simplex adapters. Fiber management is facilitated by fiber optic splice trays, which can be purchased separately.

The closure is designed for simple and efficient installation. It includes a grounding port and a pressure test valve installed in the dome of the closure. All metal components are made of corrosion-resistant materials.



The set includes:

- Bracket for mounting the closure on a pole/wall/other structure
- Panel na adaptery 6x SC Simplex
- Heat-shrink sealing tapes for cable entry ports
- Splice protection sleeves
- Fiber distribution tubes
- Self-adhesive aluminum tape for protecting the cable during heat-shrinking of heat-shrink tape
- Sandpaper
- Grounding cables

Accessories to be purchased separately:

- Tycon A1/B1 fiber optic splice trays



Technical Data

Product name	Height (dome Ø/ mounting Ø) [mm]	IP protection rating	Splice tray (splICES)	Max. splice capacity (trays)	Max. adapters	Basket depth [mm]	GCC*/ Grounding	Sealing	Ports [mm]	
									Round	Oval
Tycon 400 fiber optic closure B5-T-06S 168J-07xA/B M2-B38	575.0 (180.0/235.0)	IP68	A/B (24)	168 (7)	6x SC Simplex	38	Yes / Yes	Heat-shrinkable	5x (Ø21.0)	1x (81.0 × 47.0)

* GCC: grounding cable connection

TYCON 400 FIBER OPTIC CLOSURE

B5-T-12S 144J-06xA/B M8-B38

TN-FOSC400B5144BBR38



The closure is equipped with fully hermetic, heat-shrinkable inlet/outlet ports. It is used to protect fiber optic cable splices and for branching applications. The housing is made of high-quality plastic resistant to UV radiation, low (-40°C) and high (+60°C) temperatures, as well as chemical substances, making it suitable for aerial, duct, and direct-buried installations. It has an IP68 protection rating.

The closure is equipped with a panel capable of accommodating 12 SC Simplex adapters. Fiber management is facilitated by fiber optic splice trays, which can be purchased separately.

The closure is designed for simple and efficient installation. It includes a grounding port and a pressure test valve installed in the dome of the closure. All metal components are made of corrosion-resistant materials.



The set includes:

- Bracket for mounting the closure on a pole/wall/other structure
- Panel na adaptery 12x SC Simplex
- Heat-shrink sealing tapes for cable entry ports
- Splice protection sleeves
- Fiber distribution tubes
- Self-adhesive aluminum tape for protecting the cable during heat-shrinking of heat-shrink tape
- Sandpaper
- Grounding cables

Accessories to be purchased separately:

- Tycon A1/B1 fiber optic splice trays



Technical Data

Product name	Height (dome Ø/ mounting Ø) [mm]	IP protection rating	Splice tray (spli- ces)	Max. splice capacity (trays)	Max. adapters	Basket depth [mm]	GCC*/ Ground- ing	Sealing	Ports [mm]	
									Round	Oval
Tycon 400 fiber optic closure B5-T-12S 144J-06xA/B M8-B38	575.0 (180.0/235.0)	IP68	A/B (24)	144 (6)	12x SC Simplex	38	Yes / Yes	Heat-shrin- kable	5x (Ø21.0)	1x (81.0 × 47.0)

* GCC: grounding cable connection

TYCON 400 FIBER OPTIC CLOSURE

B5-T-12S 216J-09xA/B M8-B13

TN-FOSC400B5216BR13



The closure is equipped with fully hermetic, heat-shrinkable inlet/outlet ports. It is used to protect fiber optic cable splices and for branching applications. The housing is made of high-quality plastic resistant to UV radiation, low (-40°C) and high (+60°C) temperatures, as well as chemical substances, making it suitable for aerial, duct, and direct-buried installations. It has an IP68 protection rating.

The closure is equipped with a panel capable of accommodating 12 SC Simplex adapters. Fiber management is facilitated by fiber optic splice trays, which can be purchased separately.

The closure is designed for simple and efficient installation. It includes a grounding port and a pressure test valve installed in the dome of the closure. All metal components are made of corrosion-resistant materials.



The set includes:

- Bracket for mounting the closure on a pole/wall/other structure
- Panel na adaptery 12x SC Simplex
- Heat-shrink sealing tapes for cable entry ports
- Splice protection sleeves
- Fiber distribution tubes
- Self-adhesive aluminum tape for protecting the cable during heat-shrinking of heat-shrink tape
- Sandpaper
- Grounding cables

Accessories to be purchased separately:

- Tycon A1/B1 fiber optic splice trays



Technical Data

Product name	Height (dome Ø/ mounting Ø) [mm]	IP protection rating	Splice tray (spli- ces)	Max. splice capacity (trays)	Max. adapters	Basket depth [mm]	GCC*/ Ground- ing	Sealing	Ports [mm]	
									Round	Oval
Tycon 400 fiber optic closure B5-T-12S 216J-09xA/B M8-B13	575.0 (180.0/235.0)	IP68	A/B (24)	216 (9)	12x SC Simplex	13	Yes / Yes	Heat-shrin- kable	5x (Ø21.0)	1x (81.0 × 47.0)

* GCC: grounding cable connection

TYCON 400 FIBER OPTIC CLOSURE**B8-T-000 096J-04xA/B A8-000**

TN-FOSC-400-B8



The closure is equipped with fully hermetic, heat-shrinkable inlet/outlet ports. It is used to protect fiber optic cable splices and for branching applications. Fiber management inside the closure is facilitated by fiber optic splice trays, which can be purchased separately. The closure housing is made of high-quality plastic, resistant to UV radiation, low (-40°C) and high (+60°C) temperatures, as well as chemical substances, making it suitable for aerial, duct, and direct-buried installations. It has an IP68 protection rating.

The closure is designed for simple and efficient installation. All metal components are made of corrosion-resistant materials.

It is also equipped with a grounding port and a pressure test valve installed in the dome of the closure.

The set includes:

- Bracket for mounting the closure on a pole/wall/other structure
- Heat-shrink sealing tapes for cable entry ports
- Splice protection sleeves
- Fiber distribution tubes
- Self-adhesive aluminum tape for cable protection during heat-shrink sealing
- Sandpaper
- Paper labels
- Self-adhesive tape
- Grounding cables

Accessories to be purchased separately:

- Tycon A1/B1 fiber optic splice trays

Technical Data

Product name	Height (dome Ø/ mounting Ø) [mm]	IP protec- tion rating	Splice tray (splices)	Max. splice capacity (trays)	GCC*/ Grounding	Sealing	Ports [mm]	
							Round	Oval
Tycon 400 fiber optic closure B8-T-000 096J-04xA/B A8-000	520.0 (144.0/205.0)	IP68	A/B (24)	96 (4)	Yes / Yes	Heat-shrinkable	8x (Ø11.0)	1x (37.0 × 59.0)

* GCC: grounding cable connection

TYCON 400 FIBER OPTIC CLOSURE**D5-T-000 432J-06xC M4-B52**

TN-FOSC-400-D5-V2



The closure is equipped with fully hermetic, heat-shrinkable inlet/outlet ports. It is used to protect fiber optic cable splices and for branching applications. Fiber management inside the closure is facilitated by fiber optic splice trays, which can be purchased separately. The closure housing is made of high-quality plastic, resistant to UV radiation, low (-40°C) and high (+60°C) temperatures, as well as chemical substances, making it suitable for aerial, duct, and direct-buried installations. It has an IP68 protection rating.

The closure is designed for simple and efficient installation. All metal components are made of corrosion-resistant materials.

It is also equipped with a grounding port and a pressure test valve installed in the dome of the closure.

**The set includes:**

- Bracket for mounting the closure on a pole/wall/other structure
- Heat-shrinkable tubes for sealing cable entry ports
- Splice protection sleeves
- Protective tubes for fiber distribution
- Sandpaper
- Grounding cables
- Cleaning wipes
- Self-adhesive aluminum tape for protecting the cable during heat-shrinking of heat-shrink tubes

Accessories to be purchased separately:

- Tycon C1 fiber optic splice trays

**Technical Data**

Product name	Height (dome Ø/ mounting Ø) [mm]	IP protec- tion rating	Splice tray (splices)	Max. splice capacity (trays)	Basket depth [mm]	GCC*/ Grounding	Sealing	Ports [mm]	
								Round	Oval
Tycon 400 fiber optic closure D5-T-000 432J-06xC M4-B52	690.0 (230.0/330.0)	IP68	C (72)	432 (6)	52	Yes / Yes	Heat-shrin- kable	5x (Ø30.0)	1x (69.0 × 36.0)

* GCC: grounding cable connection

TYCON 400 FIBER OPTIC CLOSURE**D5-T-000 576J-08xC M4-B27**

TN-FOSC-400-D5C



The closure is equipped with fully hermetic, heat-shrinkable inlet/outlet ports. It is used to protect fiber optic cable splices and for branching applications. Fiber management inside the closure is facilitated by fiber optic splice trays, which can be purchased separately. The closure housing is made of high-quality plastic, resistant to UV radiation, low (-40°C) and high (+60°C) temperatures, as well as chemical substances, making it suitable for aerial, duct, and direct-buried installations. It has an IP68 protection rating.

The closure is designed for simple and efficient installation. All metal components are made of corrosion-resistant materials.

The closure is also equipped with a grounding port and a pressure test valve installed in the dome of the closure.

**The set includes:**

- Bracket for mounting the closure on a pole/wall/other structure
- Heat-shrinkable tubes for sealing cable entry ports
- Splice protection sleeves
- Protective tubes for fiber distribution
- Sandpaper
- Grounding cables
- Cleaning wipes
- Self-adhesive aluminum tape for protecting the cable during heat-shrinking of heat-shrink tubes

Accessories to be purchased separately:

- Tycon C1 fiber optic splice trays

**Technical Data**

Product name	Height (dome Ø/ mounting Ø) [mm]	IP protec- tion rating	Splice tray (splices)	Max. splice capacity (trays)	Basket depth [mm]	GCC**/ Grounding	Sealing	Ports [mm]	
								Round	Oval
Tycon 400 fiber optic closure D5-T-000 576J-08xC M4-B27	690.0 (230.0/330.0)	IP68	C (72)	576 (8)	27	Yes / Yes	Heat-shrin- kable	5x (Ø31.0)	1x (78.0 × 45.0)

* GCC: grounding cable connection

TYCON 450 FIBER OPTIC CLOSURE

B4-D-000 144J-06xE M8-B29

TN-FOSC-450-B4-D+BR



The closure is equipped with fully hermetic mechanical inlet/outlet ports (sealed using the included dedicated grommets). It is used to protect fiber optic cable splices and for branching applications. Fiber management inside the closure is facilitated by fiber optic splice trays, which can be purchased separately. The housing is made of high-quality plastic, resistant to UV radiation, low (-40°C) and high (+60°C) temperatures, as well as chemical substances, making it suitable for aerial, duct, and direct-buried installations. It has an IP68 protection rating.

The closure is designed for simple and efficient installation. All metal components are made of corrosion-resistant materials.

The product is equipped with a compact basket that facilitates the arrangement of fiber optic tubes and cables, as well as a grounding pass-through and a pressure control valve installed in the dome of the closure.

The set includes:

- Bracket for mounting the closure on a pole/wall/other structure
- Rubber grommets for sealing cable entries
- 60 mm splice protection sleeves
- Protective tubes for fiber distribution
- Gland wrench
- Mechanical plugs for round ports
- Cleaning wipes
- Grounding cables

Accessories to be purchased separately:

- Tycon E1 fiber optic splice trays

Technical Data

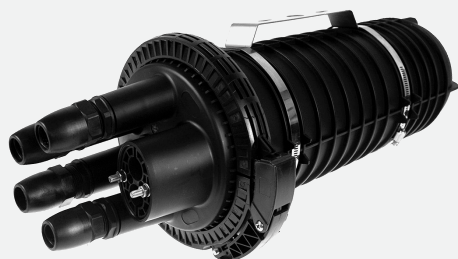
Product name	Height (dome Ø/ mounting Ø) [mm]	IP protec- tion rating	Splice tray (splices)	Max. splice capacity (trays)	Basket depth [mm]	GCC**/ Grounding	Sealing	Ports [mm]	
								Round	Oval
Tycon 450 fiber optic closure B4-D-000 144J-06xE M8-B29	515.0 (165.0/240.0)	IP68	E (24)	144 (6)	29	Yes / Yes	Mechanical	4x (Ø23.0)	1x (62.0 × 37.0)

* GCC: grounding cable connection

TYCON 450 FIBER OPTIC CLOSURE

B4-D-24S 120J-05xE M8-B21

TN-FOSC-450-B4-D-24S



The closure is equipped with fully hermetic mechanical inlet/outlet ports (sealed using the included dedicated grommets). It is used to protect fiber optic cable splices and for branching applications. Fiber management inside the closure is facilitated by fiber optic splice trays, which can be purchased separately. The housing is made of high-quality plastic, resistant to UV radiation, low (-40°C) and high (+60°C) temperatures, as well as chemical substances, making it suitable for aerial, duct, and direct-buried installations. It has an IP68 protection rating.

The closure is designed for simple and efficient installation. All metal components are made of corrosion-resistant materials.

The product is equipped with a compact basket that facilitates the arrangement of fiber optic tubes and cables, as well as a grounding pass-through and a pressure control valve installed in the dome of the closure.

The set includes:

- Bracket for mounting the closure on a pole/wall/other structure
- Rubber grommets for sealing cable entries
- Gland wrench
- 60 mm splice protection sleeves
- Protective tubes for fiber distribution
- Grounding cables
- Cleaning wipes

Accessories to be purchased separately:

- Tycon E1 fiber optic splice trays

Technical Data

Product name	Height (dome Ø/ mounting Ø) [mm]	IP protec- tion rating	Splice tray (splices)	Max. splice capacity (trays)	Basket depth [mm]	GCC**/ Grounding	Sealing	Ports [mm]	
								Round	Oval
Tycon 450 fiber optic closure B4-D-24S 120J-05xE M8-B21	580.0 (165.0/230.0)	IP68	E (24)	120 (5)	21	Yes / Yes	Mechanical	4x (Ø18.5)	2x (Ø20.5)

* GCC: grounding cable connection

TYCON 450 FIBER OPTIC CLOSURE

B4-T-000 144J-06xE M8-B29

TN-FOSC-450-B4+BR



The closure is equipped with fully hermetic, heat-shrinkable inlet/outlet ports. It is used to protect fiber optic cable splices and for branching applications. Fiber management inside the closure is facilitated by fiber optic splice trays, which can be purchased separately. The closure housing is made of high-quality plastic, resistant to UV radiation, low (-40°C) and high (+60°C) temperatures, as well as chemical substances, making it suitable for aerial, duct, and direct-buried installations. It has an IP68 protection rating.

The closure is designed for simple and efficient installation. All metal components are made of corrosion-resistant materials.

The product is also equipped with a grounding port and a pressure test valve installed in the dome of the closure.

The set includes:

- Bracket for mounting the closure on a pole/wall/other structure
- Heat-shrinkable tubes for sealing cable entry ports
- 40 mm splice protection sleeves
- Protective tubes for fiber distribution
- Sandpaper
- Grounding cables
- Cleaning wipes
- Self-adhesive aluminum tape for protecting the cable during heat-shrinking of heat-shrink tubes



Accessories to be purchased separately:

- Tycon E1 fiber optic splice trays



Technical Data

Product name	Height (dome Ø/ mounting Ø) [mm]	IP protection rating	Splice tray (splices)	Max. splice capacity (trays)	Basket depth [mm]	GCC**/ Grounding	Sealing	Ports [mm]	
								Round	Oval
Tycon 450 fiber optic closure B4-T-000 144J-06xE M8-B29	515.0 (165.0/205.0)	IP68	E (24)	144 (6)	29	Yes / Yes	Heat-shrinkable	4x (Ø23.0)	1x (62.0 × 37.0)

* GCC: grounding cable connection

TYCON 500 FIBER OPTIC CLOSURE

B16-T-000 096J-08xD12F M5-000

TN-B16-96J



The closure is equipped with fully hermetic, heat-shrinkable inlet/outlet ports. It is used to protect fiber optic cable splices and for branching applications. Fiber management inside the closure is facilitated by fiber optic splice trays, which can be purchased separately. The closure housing is made of high-quality plastic, resistant to UV radiation, low (-40°C) and high (+60°C) temperatures, as well as chemical substances, making it suitable for aerial, duct, and direct-buried installations. It has an IP68 protection rating.

The closure is designed for simple and efficient installation. All metal components are made of corrosion-resistant materials.

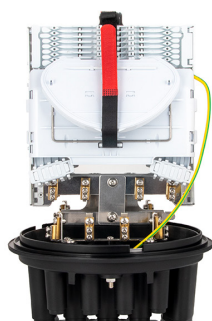
The product is also equipped with a grounding port and a pressure test valve installed in the dome of the closure.

The set includes:

- Bracket for mounting the closure on a pole/wall/other structure
- Mounting screws and accessories
- Sealing and protective tapes
- Heat-shrink sleeves
- Sandpaper
- Grounding cables
- Cleaning wipes

Accessories to be purchased separately:

- Tycon D1-2S-12F fiber optic trays



Technical Data

Product name	Height (dome Ø/ mounting Ø) [mm]	IP protec- tion rating	Splice tray (splices)	Max. splice capacity (trays)	GCC**/ Grounding	Sealing	Ports [mm]	
							Round	Oval
Tycon 500 fiber optic closure B16-T-000 096J-08xD12F M5-000	385.0 (235.0/320.0)	IP68	D (6/12*)	48/96* (8)	Yes / Yes	Heat-shrin- kable	8x (Ø14.0) 8x (Ø20.0)	1x (32.0 × 90.0)

* with double splice arrangement ** GCC: grounding cable connection

TYCON 500 FIBER OPTIC CLOSURE

B16-T-000 128J-16xD-1SLOT M5-000

TN-B16-T-000000



The closure is equipped with fully hermetic, heat-shrinkable inlet/outlet ports. It is used to protect fiber optic cable splices and for branching applications. Fiber management inside the closure is facilitated by fiber optic splice trays, which can be purchased separately. The closure housing is made of high-quality plastic, resistant to UV radiation, low (-40°C) and high (+60°C) temperatures, as well as chemical substances, making it suitable for aerial, duct, and direct-buried installations. It has an IP68 protection rating.

The closure is designed for simple and efficient installation. All metal components are made of corrosion-resistant materials.

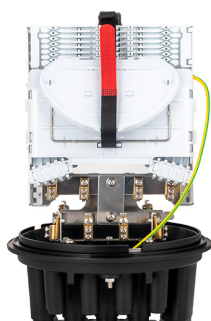
The product is also equipped with a grounding port and a pressure test valve installed in the dome of the closure.

The set includes:

- Bracket for mounting the closure on a pole/wall/other structure
- Mounting screws and accessories
- Sealing and protective tapes
- Heat-shrink sleeves
- Sandpaper
- Grounding cables
- Cleaning wipes

Accessories to be purchased separately:

- Tycon D-1S-08F or D1-2S-12F fiber optic trays



Technical Data

Product name	Height (dome Ø/ mounting Ø) [mm]	IP protec- tion rating	Splice tray (splices)	Max. splice capacity (trays)	GCC**/ Grounding	Sealing	Ports [mm]	
							Round	Oval
Tycon 500 fiber optic closure B16-T-000 096J-08xD12F M5-000	385.0 (235.0/320.0)	IP68	D (8) D (6/12*)	128 (16) 48/96* (8)	Yes / Yes	Heat-shrin- kable	8x (Ø14.0) 8x (Ø20.0)	1x (32.0 × 90.0)

* with double splice arrangement ** GCC: grounding cable connection

TYCON 500 FIBER OPTIC CLOSURE

C16-T-48S 192J-24xD-1SLOT M5-000

TN-C16-T-000000-1



The closure is equipped with fully hermetic, heat-shrinkable inlet/outlet ports. It is used to protect fiber optic cable splices and for branching applications. The housing is made of high-quality plastic resistant to UV radiation, low (-40°C) and high (+60°C) temperatures, as well as chemical substances, making it suitable for aerial, duct, and direct-buried installations. It has an IP68 protection rating.

The splice closure is equipped with a panel capable of holding 48 SC Simplex adapters. Fiber management is facilitated by fiber optic splice trays, which can be purchased separately.

The closure is designed for simple and efficient installation. It includes a grounding port and a pressure test valve installed in the dome of the closure. All metal components are made of corrosion-resistant materials.



The set includes:

- Bracket for mounting the closure on a pole/wall/other structure
- Panel for 48 × SC Simplex adapters
- Mounting screws and accessories
- Sealing and protective tapes
- Heat-shrink sleeves
- Sandpaper
- Grounding cables
- Cleaning wipes

Accessories to be purchased separately:

- Tycon D1 fiber optic trays



Technical Data

Product name	Height (dome Ø/ mounting Ø) [mm]	IP protection rating	Splice tray (spli- ces)	Max. splice capacity (trays)	Max. adapters	GCC**/ Grounding	Sealing	Ports [mm]	
								Round	Oval
Tycon 400 fiber optic closure B5-T-12S 216J-09xA/B M8- B13	505.0 (235.0/320.0)	IP68	D (8) D (6/12*)	192 (24) 144* (12)	48x SC Simplex	Yes / Yes	Heat-shrin- kable	8x (Ø14.0) 8x (Ø20.0)	1x (32.0 × 90.0)

* with double splice arrangement ** GCC: grounding cable connection

TYCON 500 FIBER OPTIC CLOSURE

C16-T-000 384J-48xD-1SLOT M5-000

TN-C16-T-000000



The closure is equipped with fully hermetic, heat-shrinkable inlet/outlet ports. It is used to protect fiber optic cable splices and for branching applications. Fiber management inside the closure is facilitated by fiber optic splice trays, which can be purchased separately. The closure housing is made of high-quality plastic, resistant to UV radiation, low (-40°C) and high (+60°C) temperatures, as well as chemical substances, making it suitable for aerial, duct, and direct-buried installations. It has an IP68 protection rating.

The closure is designed for simple and efficient installation. All metal components are made of corrosion-resistant materials.

The product is also equipped with a grounding port and a pressure test valve installed in the dome of the closure.

The set includes:

- Bracket for mounting the closure on a pole/wall/other structure
- Mounting screws and accessories
- Sealing and protective tapes
- Heat-shrink sleeves
- Sandpaper
- Grounding cables
- Cleaning wipes

Accessories to be purchased separately:

- Tycon D1 fiber optic trays



Technical Data

Product name	Height (dome Ø/ mounting Ø) [mm]	IP protec- tion rating	Splice tray (splices)	Max. splice capacity (trays)	GCC**/ Grounding	Sealing	Ports [mm]	
							Round	Oval
Tycon 500 fiber optic closure B16-T-000 096J-08xD12F M5-000	505.0 (235.0/320.0)	IP68	D (8) D (6/12*)	384 (48) 288* (24)	Yes / Yes	Heat-shrin- kable	8x (Ø14.0) 8x (Ø20.0)	1x (32.0 × 90.0)

* with double splice arrangement ** GCC: grounding cable connection

TYCON 500 FIBER OPTIC CLOSURE

C6-T-000 384J-48xD-1SLOT M5-000

TN-C6-T-000000



The closure is equipped with fully hermetic, heat-shrinkable inlet/outlet ports. It is used to protect fiber optic cable splices and for branching applications. Fiber management inside the closure is facilitated by fiber optic splice trays, which can be purchased separately. The closure housing is made of high-quality plastic, resistant to UV radiation, low (-40°C) and high (+60°C) temperatures, as well as chemical substances, making it suitable for aerial, duct, and direct-buried installations. It has an IP68 protection rating.

The closure is designed for simple and efficient installation. All metal components are made of corrosion-resistant materials.

The product is also equipped with a grounding port and a pressure test valve installed in the dome of the closure.



The set includes:

- Bracket for mounting the closure on a pole/wall/other structure
- Mounting screws and accessories
- Heat-shrink sleeves for sealing the oval port (1 pc) and round ports (6 pcs)
- Splice protection sleeves
- Protective tubes for fiber distribution
- Single-use plastic cable ties (zip ties)
- Sealing and protective tapes
- Heat-activated sealing tape for the oval port
- Self-adhesive aluminum tapes for cable protection
- Grounding cables
- Alcohol wipes



Accessories to be purchased separately:

- Tycon D1 fiber optic trays

Technical Data

Product name	Height (dome Ø/ mounting Ø) [mm]	IP protection rating	Splice tray (splices)	Max. splice capacity (trays)	GCC**/ Grounding	Sealing	Ports [mm]	
							Round	Oval
Tycon 500 fiber optic closure C6-T-000 384J-48xD-1slot M5-000	505.0 (235.0/320.0)	IP68	D (8) D (6/12*)	384 (48) 288* (24)	Yes / Yes	Heat-shrinkable	6x (Ø33.0)	1x (90.0 × 32.0)

* with double splice arrangement ** GCC: grounding cable connection

TYCON 500 FIBER OPTIC CLOSURE

C6-T-48S 192J-24xD-1SLOT M5-000

TN-C6-T-48S000



The closure is equipped with fully hermetic, heat-shrinkable inlet/outlet ports. It is used to protect fiber optic cable splices and for branching applications. Fiber management inside the closure is facilitated by fiber optic splice trays, which can be purchased separately. The closure housing is made of high-quality plastic, resistant to UV radiation, low (-40°C) and high (+60°C) temperatures, as well as chemical substances, making it suitable for aerial, duct, and direct-buried installations. It has an IP68 protection rating.

The closure is designed for simple and efficient installation. All metal components are made of corrosion-resistant materials.

The product is also equipped with a grounding port and a pressure test valve installed in the dome of the closure.



The set includes:

- Bracket for mounting the closure on a pole/wall/other structure
- Panel for 48 × SC Simplex adapters
- Mounting screws and accessories
- Heat-shrink sleeves for sealing the oval port (1 pc) and round ports (6 pcs)
- Splice protection sleeves
- Protective tubes for fiber distribution
- Single-use plastic cable ties (zip ties)
- Sealing and protective tapes
- Heat-activated sealing tape for the oval port
- Self-adhesive aluminum tapes for cable protection
- Grounding cables
- Alcohol wipes

Accessories to be purchased separately:

- Tycon D1 fiber optic trays



Technical Data

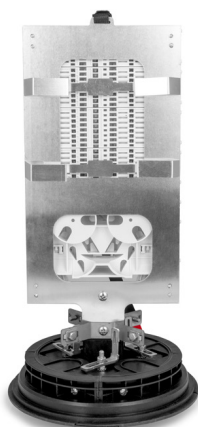
Product name	Height (dome Ø/ mounting Ø) [mm]	IP protection rating	Splice tray (spli- ces)	Max. splice capacity (trays)	Max. adapters	GCC**/ Grounding	Sealing	Ports [mm]	
								Round	Oval
Tycon 500 fiber optic closure C6-T-48S 192J-24xD-1slot M5-000	505.0 (235.0/320.0)	IP68	D (8) D (6/12*)	192 (24) 144* (12)	48x SC Simplex	Yes / Yes	Heat-shrinkable	6x (Ø33.0)	1x (90.0 × 32.0)

* with double splice arrangement ** GCC: grounding cable connection

TYCON 500 FIBER OPTIC CLOSURE

C8-D-000 256J-32xD-1SLOT A8-B29

TN-C8-D-000B29



The closure is equipped with fully hermetic mechanical inlet/outlet ports (sealed using the included dedicated grommets). Każdy z czterech portów posiada miejsce na dwa kable o średnicach 10.7 oraz 15.2 mm. The closure is used to protect fiber optic cable splices and for branching applications. Fiber management inside the closure is facilitated by fiber optic splice trays, which can be purchased separately. The housing is made of high-quality plastic, resistant to UV radiation, low (-40°C) and high (+60°C) temperatures, as well as chemical substances, making it suitable for aerial, duct, and direct-buried installations. It has an IP68 protection rating.

The closure is designed for simple and efficient installation. All metal components are made of corrosion-resistant materials.

The product is equipped with a compact basket that facilitates the arrangement of fiber optic tubes and cables, as well as a grounding pass-through and a pressure control valve installed in the dome of the closure.

The set includes:

- Bracket for mounting the closure on a pole/wall/other structure
- Mounting screws and accessories
- Heat-shrink sleeves for sealing the oval port (1 pc) and round ports (6 pcs)
- Splice protection sleeves
- Protective tubes for fiber distribution
- Single-use plastic cable ties (zip ties)
- Sealing and protective tapes
- Heat-activated sealing tape for the oval port
- Self-adhesive aluminum tapes for cable protection
- Grounding cables
- Cleaning wipes

Accessories to be purchased separately:

- Tycon D1 fiber optic trays

Technical Data

Product name	Dimensions [H×W×D] [mm]	IP protection rating	Splice tray (splices)	Max. splice capacity (trays)	Basket depth [mm]	GCC**/Grounding	Sealing	Ports [mm]	
								Round	Oval
Tycon 500 fiber optic closure C8-D-000 256J-32xD-1slot A8-B29	500.0 × 130.0	IP68	D (8) D (6/12*)	256 (32) 192* (16)	29	Yes / Yes	Mechanical	4x (Ø10.7)/ 4x (Ø15.2)	-

* with double splice arrangement ** GCC: grounding cable connection

TYCON 500 FIBER OPTIC CLOSURE

F6-T-14S 192J-24xD-1SLOT M5-000

TN-F6-T-14S000



The closure is equipped with fully hermetic, heat-shrinkable inlet/outlet ports. It is used to protect fiber optic cable splices and for branching applications. Fiber management inside the closure is facilitated by fiber optic splice trays, which can be purchased separately. The closure housing is made of high-quality plastic, resistant to UV radiation, low (-40°C) and high (+60°C) temperatures, as well as chemical substances, making it suitable for aerial, duct, and direct-buried installations. It has an IP68 protection rating.

The closure is designed for simple and efficient installation. All metal components are made of corrosion-resistant materials.

The product is also equipped with a grounding port and a pressure test valve installed in the dome of the closure.

The set includes:

- Bracket for mounting the closure on a pole/wall/other structure
- Mounting screws and accessories
- Splice protection sleeves
- Heat-shrink sealing for round ports
- Protective tubes for fiber distribution
- Single-use plastic cable ties (zip ties)
- Sealing and protective tapes
- Heat-activated sealing tape for the oval port
- Self-adhesive aluminum tapes for cable protection
- Grounding cables
- Alcohol wipes

Accessories to be purchased separately:

- Tycon D1 fiber optic trays

Technical Data

Product name	Height (dome Ø/ mounting Ø) [mm]	IP protection rating	Splice tray (splices)	Max. splice capacity (trays)	Max. adapters	GCC**/ Grounding	Sealing	Ports [mm]	
								Round	Oval
Tycon 500 fiber optic closure F6-T-14S 192J-24xD-1slot M5-000	460.0 × 180.0/150.0	IP68	D (8) D (6/12*)	192 (24) 144* (12)	14x SC SX	Yes / Yes	Heat-shrinkable	6x (Ø20.0) 6x (Ø13.5)	1x (33.0 × 88.0)

* with double splice arrangement ** GCC: grounding cable connection

TYCON 500 FIBER OPTIC CLOSURE

F6-D-14S 192J-24xD-1SLOT M5-000

TN-F6-D-14S000



The closure is equipped with fully hermetic mechanical inlet/outlet ports (sealed using the included dedicated grommets). It is used to protect fiber optic cable splices and for branching applications. Fiber management inside the closure is facilitated by fiber optic splice trays, which can be purchased separately. The housing is made of high-quality plastic, resistant to UV radiation, low (-40°C) and high (+60°C) temperatures, as well as chemical substances, making it suitable for aerial, duct, and direct-buried installations. It has an IP68 protection rating.

The closure is designed for simple and efficient installation. All metal components are made of corrosion-resistant materials.

The product is also equipped with a grounding port and a pressure test valve installed in the dome of the closure.

The set includes:

- Bracket for mounting the closure on a pole/wall/other structure
- Mounting screws and accessories
- Splice protection sleeves
- Heat-shrink sealing for round ports
- Protective tubes for fiber distribution
- Single-use plastic cable ties (zip ties)
- Sealing and protective tapes
- Heat-activated sealing tape for the oval port
- Self-adhesive aluminum tapes for cable protection
- Grounding cables
- Alcohol wipes

Accessories to be purchased separately:

- Tycon D1 fiber optic trays

Technical Data

Product name	Height (dome Ø/ mounting Ø) [mm]	IP pro- tec- tion rating	Splice tray (spli- ces)	Max. splice capacity (trays)	Max. adapters	GCC**/ Grounding	Sealing	Ports [mm]	
								Round	Oval
Tycon 500 fiber optic closure F6-D-14S 192J-24xD-1slot M5-000	460.0 × 180.0/150.0	IP68	D (8) D (6/12*)	192 (24) 144* (12)	14x SC SX	Yes / Yes	Mechanical	6x (Ø20.0) 6x (Ø13.5)	1x (33.0 × 88.0)

* with double splice arrangement ** GCC: grounding cable connection

TYCON FIBER OPTIC CLOSURE

B6-T-000 128J-16xD-1SLOT M5-000

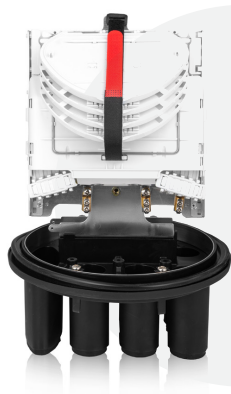
TN-B6-T-000000



The closure is equipped with fully hermetic, heat-shrinkable inlet/outlet ports. It is used to protect fiber optic cable splices and for branching applications. Fiber management inside the closure is facilitated by fiber optic splice trays, which can be purchased separately. The closure housing is made of high-quality plastic, resistant to UV radiation, low (-40°C) and high (+60°C) temperatures, as well as chemical substances, making it suitable for aerial, duct, and direct-buried installations. It has an IP68 protection rating.

The closure is designed for simple and efficient installation. All metal components are made of corrosion-resistant materials.

The product is also equipped with a grounding port and a pressure test valve installed in the dome of the closure.



The set includes:

- Bracket for mounting the closure on a pole/wall/other structure
- Mounting screws and accessories
- Heat-shrink sleeves
- Protective tubes for fiber distribution
- Sealing and protective tapes
- Sandpaper
- Grounding cables
- Alcohol wipes



Accessories to be purchased separately:

- Tycon D1 fiber optic trays

Technical Data

Product name	Height (dome Ø/ mounting Ø) [mm]	IP protec- tion rating	Splice tray (splices)	Max. splice capacity (trays)	GCC**/ Grounding	Sealing	Ports [mm]	
							Round	Oval
Tycon fiber optic closure B6-T-000 128J-16xD-1slot M5-000	300.0 × 250.0/390.0	IP68	D (8) D (6/12)*	128 (16)	Yes / Yes	Heat-shrinkable	6x (Ø35.0)	1x (35.0 × 95.0)

* with double splice arrangement ** GCC: grounding cable connection

TYCON FIBER OPTIC CLOSURE

D16-T-000 800J-100xD-1SLOT M5-000

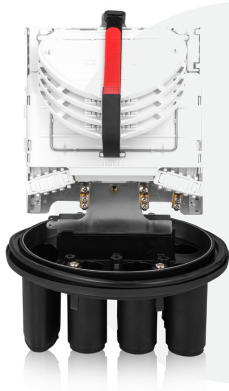
TN-D16-T-000000



The closure is equipped with fully hermetic, heat-shrinkable inlet/outlet ports. It is used to protect fiber optic cable splices and for branching applications. Fiber management inside the closure is facilitated by fiber optic splice trays, which can be purchased separately. The closure housing is made of high-quality plastic, resistant to UV radiation, low (-40°C) and high (+60°C) temperatures, as well as chemical substances, making it suitable for aerial, duct, and direct-buried installations. It has an IP68 protection rating.

The closure is designed for simple and efficient installation. All metal components are made of corrosion-resistant materials.

The product is also equipped with a grounding port and a pressure test valve installed in the dome of the closure.



The set includes:

- Bracket for mounting the closure on a pole/wall/other structure
- Mounting screws and accessories
- Heat-shrink sleeves
- Protective tubes for fiber distribution
- Sealing and protective tapes
- Sandpaper
- Grounding cables
- Alcohol wipes



Accessories to be purchased separately:

- Tycon D1 fiber optic trays

Technical Data

Product name	Height (dome Ø/ mounting Ø) [mm]	IP protec- tion rating	Splice tray (splices)	Max. splice capacity (trays)	GCC**/ Grounding	Sealing	Ports [mm]	
							Round	Oval
Tycon fiber optic closure D16-T-000 800J-100xD-1slot M5-000	600.0 × 250.0/700.0	IP68	D (8) D (6/12)*	800 (100) 600 (50)	Yes / Yes	Heat-shrinkable	8x (Ø14.0) 8x (Ø19.0)	1x (36.0 × 94.0)

* with double splice arrangement ** GCC: grounding cable connection

TYCON INLINE H20 IN-LINE FIBER OPTIC CLOSURE (MAX: 42J)

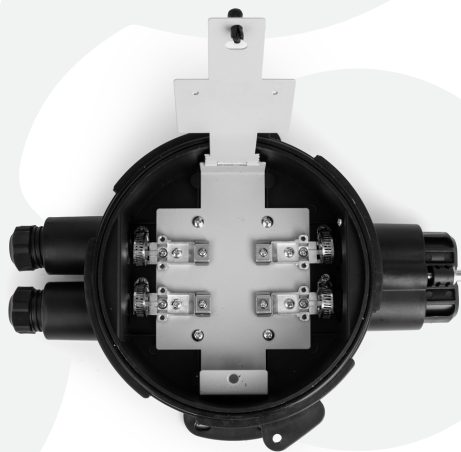
TN-INLINE-H20



Horizontal closure, equipped with 4 inlet/outlet ports. This type of closure is used to protect fiber optic cable splices and branching applications. The closure is designed for simple and efficient installation. The organization of fiber optic strands in the closure is facilitated by three fiber optic trays, each accommodating 7 splices (can be arranged in double layers).

The enclosure is made of high-quality material resistant to UV radiation, low (-40 °C) and high (+60 °C) temperatures, and chemical substances. It has an IP66 protection rating.

The flat and compact design of the closure allows installation in locations with limited space. All metal components are made of corrosion-resistant materials.



The set includes:

- Fiber optic tube cover
- Wrench
- Splice protection sleeves
- Sealing
- Insulating tape
- Mounting bolts and screws
- Cable ties
- Cleaning wipe
- Allen key



Technical Data

Product name	IP protection rating	Number of inlet/outlet ports and maximum diameter [mm]	Maximum number of trays that can be installed	Maximum number of splices in the closure	Dimensions [H×W×D] [mm]
Tycon INLINE H20 in-line fiber optic closure (max: 42J)	IP66	4 x 18	3	42	310.0 × 230.0 × 90.0

TYCON INLINE H25 IN-LINE FIBER OPTIC CLOSURE (MAX: 24J)

TN-INLINE-H25



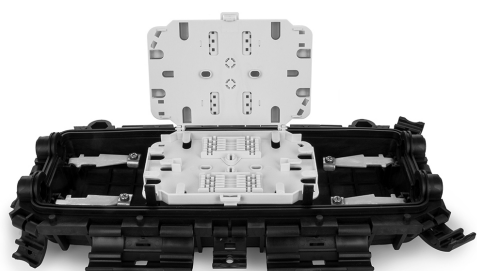
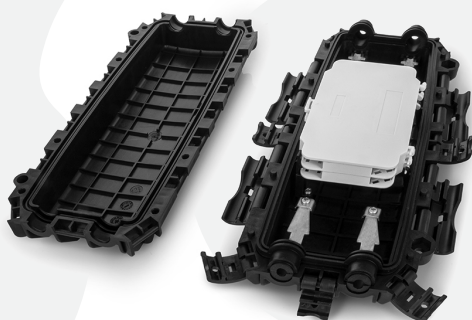
Horizontal closure, equipped with 4 inlet/outlet ports. This type of closure is used to protect fiber optic cable splices and branching applications. The closure is designed for simple and efficient installation. The organization of fiber optic strands in the closure is facilitated by two fiber optic trays, each accommodating 12 splices.

The enclosure is made of high-quality material resistant to UV radiation, low (-40 °C) and high (+60 °C) temperatures, and chemical substances. It has an IP66 protection rating.

The flat and compact design of the closure allows installation in locations with limited space. All metal components are made of corrosion-resistant materials.

The set includes:

- Sandpaper
- Cable clamps
- Hanging hooks + screws
- 2 plastic plugs
- 4 flat grommets
- Splice protection sleeves + paper labels
- Grounding cable



Technical Data

Product name	IP protection rating	Number of inlet/outlet ports and maximum diameter [mm]	Maximum number of trays that can be installed	Maximum number of splices in the closure	Dimensions [H×W×D] [mm]
Tycon INLINE H25 in-line fiber optic closure (max: 24J)	IP66	4 x 17	2 included as standard	24	350.0 × 152.0 × 92.0

TYCON INLINE H38 IN-LINE FIBER OPTIC CLOSURE (12/24J)

TN-INLINE-H38



Horizontal closure, equipped with 2 inlet/outlet ports. This type of closure is used to protect fiber optic cable splices and branching applications. The closure is designed for simple and efficient installation. The organization of fiber optic strands in the closure is facilitated by one integrated fiber optic tray, accommodating 24 splices.

The enclosure is made of high-quality material resistant to UV radiation, low (-40 °C) and high (+60 °C) temperatures, and chemical substances. It has an IP68 protection rating and IK10 impact resistance.

The closure is designed for ground-level installation.

The set includes:

- Splice protection sleeves
- Plastic cable ties



Technical Data

Product name	IP protection rating	Number of inlet/outlet ports	Maximum number of trays that can be installed	Maximum number of splices in the closure	Dimensions [H×W×D] [mm]
Tycon INLINE H38 in-line fiber optic closure (12/24j)	IP68	2	Integrated tray	24	324.0 × 67.0

TYCON OPGW FIBER OPTIC CLOSURE



Tycon OPGW are dome closures used for overhead power line lightning protection conductors containing optical fibers (OPGW), as well as for ADSS cables. They have an IP65 protection rating. The body is made entirely of aluminum and is designed for straightforward and efficient installation. The organization of fiber optic strands inside the closure is facilitated by integrated fiber optic trays. All metal components of the closures are made from corrosion-resistant materials.

The set includes:

- Fiber optic tray for 48 splices - 1 or 2 pcs
- Sealing tape
- Port sealing adhesive
- Mounting clamp
- Splice protection sleeves
- Plastic port seals
- PVC protective fiber tubes
- Single-use cable ties (zip ties)

Technical Data

Product name	Product code	Dimensions [H×W×D] [mm]	IP protection rating	Maximum number of trays that can be installed	Max. number of splices in the closure	Number of inlet/outlet ports and diameter [mm]
Tycon fiber optic closure OPGW-48-2IN	TN-FOSC-OPGW-48-2IN	470.0 × Ø200.0	IP65	Integrated tray	48	2 x Ø8.4
Tycon fiber optic closure OPGW-48-3IN	TN-FOSC-OPGW-48-3IN	470.0 × Ø200.0	IP65	Integrated tray	48	3 x Ø8.4
Tycon fiber optic closure OPGW-48-4IN	TN-FOSC-OPGW-48-4IN	470.0 × Ø200.0	IP65	Integrated tray	48	4 x Ø8.4
Tycon fiber optic closure OPGW-48-6IN	TN-FOSC-OPGW-48-6IN	470.0 × Ø200.0	IP65	Integrated tray	48	6 x Ø8.4
Tycon fiber optic closure OPGW-96-2IN	TN-FOSC-OPGW-96-2IN	470.0 × Ø200.0	IP65	Integrated tray - 2 pcs	96	2 x Ø8.4
Tycon fiber optic closure OPGW-96-6IN	TN-FOSC-OPGW-96-6IN	470.0 × Ø200.0	IP65	Integrated tray - 2 pcs	96	6 x Ø8.4

TYCON HSS TELECOMMUNICATIONS CLOSURE



Heat-shrink, composite splice closure for climatic and mechanical protection of connectors in non-pressurized telecommunications networks. Suitable for aerial, underground, or duct cables, either gel-filled or non-gel-filled, with polyethylene, lead, steel, or aluminum jackets. The multilayer Rayfort sheet structure provides excellent resistance to mechanical damage during installation and operation. A heat-activated adhesive creates a waterproof seal between the closure and the cable jacket. The metal basket inside the closure protects the cable connection from mechanical hazards and ensures proper shape. Using a three-claw clamp with heat-activated adhesive, up to 3 cables can be connected on each side.

The set includes:

- Heat-shrink sheet
- Metal basket (aluminum)
- Flexible protective insert
- Cleaning wipe (ethyl alcohol + wiper)
- Cable quick connector
- Cable branching clamp
- Strip of sandpaper
- Self-adhesive tape PVC
- Aluminum strip

Technical Data

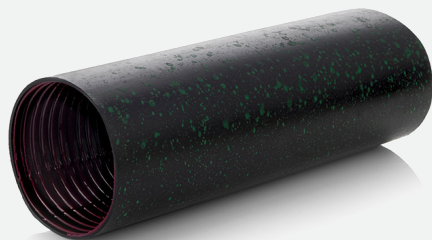
Product name	Product code	Maximum connector body diameter [mm]	Maximum cable outer diameter [mm]	Nominal connector body length [mm]
Tycon HSS telecommunications closure 500 43/8-150	TN-HSS500-43-8-150	43	8	150
Tycon HSS telecommunications closure 550 43/8-150	TN-HSS550-43-8-150	43	8	150
Tycon HSS telecommunications closure 550 43/8-300	TN-HSS550-43-8-300	43	8	300
Tycon HSS telecommunications closure 550 43/8-350	TN-HSS550-43-8-350	43	8	350
Tycon HSS telecommunications closure 550 55/12-300	TN-HSS550-55-12-500	55	12	300
Tycon HSS telecommunications closure 550 75/15-220	TN-HSS550-75-15-220	75	15	220
Tycon HSS telecommunications closure 550 75/15-300	TN-HSS550-75-15-300	75	15	300
Tycon HSS telecommunications closure 550 75/15-350	TN-HSS550-75-15-350	75	15	350
Tycon HSS telecommunications closure 550 75/15-500	TN-HSS550-75-15-500	75	15	500
Tycon HSS telecommunications closure 550 75/25-220	TN-HSS550-75-25-220	75	25	220
Tycon HSS telecommunications closure 550 75/25-300	TN-HSS550-75-25-300	75	25	300
Tycon HSS telecommunications closure 550 75/25-500	TN-HSS550-75-25-500	75	25	500
Tycon HSS telecommunications closure 550 92/25-650	TN-HSS550-9225-650	92	25	650
Tycon HSS telecommunications closure 550 125/30-300	TN-HSS550-125-30-300	125	30	300
Tycon HSS telecommunications closure 550 125/30-500	TN-HSS550-125-30-500	125	30	500
Tycon HSS telecommunications closure 550 160/42-500	TN-HSS550-160-42-500	160	42	500
Tycon HSS telecommunications closure 550 200/65-50	TN-HSS550-200-65-500	200	65	500



Sealing
accessories

TYCON

TYCON HEAT-SHRINK SLEEVE



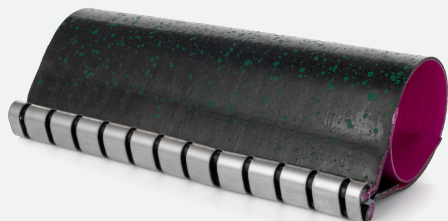
The Tycon heat-shrink sleeve is a heat-shrinkable cover with adhesive designed for the protection, sealing, and mechanical reinforcement of fiber optic cables at their entry points into closures and telecommunications enclosures. When heated, it shrinks to fit tightly around the cable and the edges of the opening, providing effective protection against moisture, dust, and other external factors.

The product increases the mechanical stability of the cable, reducing the risk of movement, bending, or damage at critical points in the installation. Thanks to its universal design, the sleeve can be used in fiber optic installations as well as in other applications requiring sealing and reinforcement of cable entries.

Technical Data

Product name	Product code	Minimum diameter [mm]	Maximum diameter [mm]	Length [mm]
Tycon heat-shrink sleeve HST-022/06-L180	OS-T-22/06-180	6	22	180
Tycon heat-shrink sleeve HST-030/06-L100	OS-T-30/06-100	6	30	100
Tycon heat-shrink sleeve HST-030/06-L180	OS-T-30/06-180	6	30	180
Tycon heat-shrink sleeve HST-033/08-L180	OS-T-33/08-180	8	33	180
Tycon heat-shrink sleeve HST-040/12-L180	OS-T-40/12-180	12	40	180
Tycon heat-shrink sleeve HST-045/15-L180	OS-T-45/15-180	15	45	180
Tycon heat-shrink sleeve HST-050/15-L120	OS-T-50/15-120	15	50	120
Tycon heat-shrink sleeve HST-055/12-L180	OS-T-55/12-180	12	55	180
Tycon heat-shrink sleeve HST-065/15-L180	OS-T-65/15-180	15	65	180
Tycon heat-shrink sleeve HST-075/15-L180	OS-T-75/15-180	15	75	180
Tycon heat-shrink sleeve HST-085/25-L180	OS-T-85/25-180	25	85	180
Tycon heat-shrink sleeve HST-095/25-L180	OS-T-95/25-180	25	95	180
Tycon heat-shrink sleeve HST-115/34-L180	OS-T-115/34-180	34	115	180
Tycon heat-shrink sleeve HST-130/36-L180	OS-T-130/36-180	36	130	180
Tycon heat-shrink sleeve HST-160/50-L180	OS-T-160/50-180	50	160	180
Tycon heat-shrink sleeve HST-180/50-L180	OS-T-180/50-180	50	180	180

TYCON SEALING KIT



Tycon sealing kit - heat-shrink repair sleeves designed for quick and durable repair of damaged cable jackets without cutting or interrupting the continuity of the cable. This solution allows effective restoration of mechanical protection and cable jacket sealing without affecting the internal structure of the cable.

The sleeves can also be used as an outer jacket in cable closures, or as additional anti-corrosion protection or mechanical reinforcement for undamaged cables. The inner surface of the sleeve is coated with a heat-activated adhesive, which during shrinking creates a permanent, watertight, and weather-resistant bond with the cable jacket.

Before shrinking, the sleeve is rolled into a tube shape and secured with a corrosion-resistant metal clamp, which facilitates installation and ensures stable positioning of the sleeve during the process.

Technical Data

Product name	Product code	Minimum diameter [mm]	Maximum diameter [mm]	Length [mm]
Tycon sealing kit HSS-033/08-L180	OS-T-33/8-180-R-KIT	8	33	180
Tycon sealing kit HSS-040/12-L180	OS-T-40/12-180-R-KIT	12	40	180
Tycon sealing kit HSS-075/15-L180	OS-T-75/15-180-R-KIT	15	75	180
Tycon sealing kit HSS-095/25-L180	OS-T-95/25-180-R-KIT	25	95	180
Tycon sealing kit HSS-130/36-L180	OS-T-130/36-180-RKIT	36	130	180
Tycon sealing kit HSS-180/50-L180	OS-T-180/50-180-RKIT	50	180	180
Tycon oval port sealing kit 95/25-180	OS-T-95/25-180-O-KIT	25	95	180

MECHANICAL SEALING FOR ROUND PORT OF TYCON 500 C6 CLOSURE, FOR 6 CABLES UP TO 8.3 mm

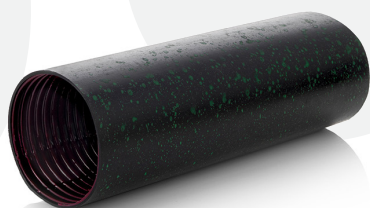
USZ-P-C6-8.3MM



Mechanical sealing for the round port of the Tycon 500 C6 closure for 6 cables up to 8.3 mm - allows replacing the thermal sealing of the round port with a mechanical seal. It features 6 inlets with a diameter of 8.3 mm.

HEAT-SHRINK SLEEVE FOR BRANCH PORT, 20 cm/60 mm

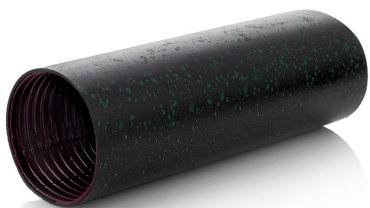
OS-T-OVAL-20-60MM



Heat-shrink sleeve for oval port, 20 cm long and 60 mm in diameter, compatible with Tycon A4, A8, B4, B8, Tracom G, and Tracom L closures. It is used in the construction of ground-level fiber optic networks.

HEAT-SHRINK SLEEVE FOR BRANCH PORT, 20 cm/80 mm

OS-T-OVAL-20



Heat-shrink sleeve for oval port 20 cm long and 80 mm in diameter, compatible with Tycon B5, D5, B4, B8, Tracom T and Tracom U closures. It is used in the construction of ground-level fiber optic networks.

BOKT CABLE BRANCH-OFF CLIP

OS-T-BRANCH-OFF-CLIP



BOKT cable branch-off clip - designed for making branch connections in cable installations. It allows stable and durable attachment of cables within heat-shrink sleeves, ensuring proper shaping and sealing of the connection.

A single clamp can accommodate a connection containing up to two cables placed in a heat-shrink sleeve. For connections with more cables, an additional clamp must be used for each extra cable, allowing flexible adaptation to the installation configuration.

The clamp is equipped with a heat-activated epoxy adhesive, which during installation creates a permanent, watertight, and weather-resistant bond, enhancing the mechanical strength and stability of the entire connection.

Technical Data

Product name	Dimensions [H×W×D] [mm]	Minimum internal diameter [mm]	Weight [g]
BOKT cable branch-off clip	28.3 × 67.8 × 10.0	13.9	14



Fiber optic
splice trays

TYCON

TYCON A1-24F FIBER OPTIC SPLICE TRAY [1x24F]

T-A



Tycon A1 - splice tray designed for organizing optical fibers in fiber optic closures and enclosures. The tray can accommodate up to 24 splices. Trays can be stacked, facilitating the installation process. Recommended splice protector length: up to 45 mm.

The tray is made of high-quality plastic.

TYCON B1-24F FIBER OPTIC SPLICE TRAY [1x24F]

T-B



Tycon B1 - splice tray designed for organizing optical fibers in fiber optic closures and enclosures. The tray can accommodate up to 24 splices. Trays can be stacked, facilitating the installation process. Recommended splice protector length: up to 45 mm.

The tray is made of high-quality plastic.

TYCON B2-24F FIBER OPTIC SPLICE TRAY [1x24F]

T-B-V2



Tycon B2 - splice tray designed for organizing optical fibers in fiber optic closures and enclosures. The tray can accommodate up to 24 splices. Trays can be stacked, facilitating the installation process. Recommended splice protector length: up to 45 mm.

The tray is made of high-quality plastic.

TYCON C1-72F FIBER OPTIC SPLICE TRAY [1x72F]

T-C

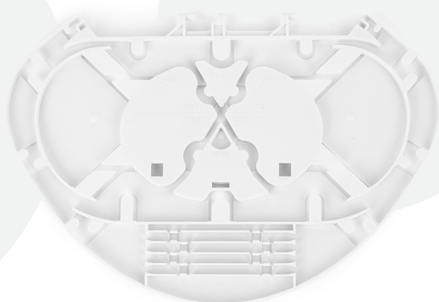


Tycon C1 - splice tray designed for organizing optical fibers in fiber optic closures and enclosures. The tray can accommodate up to 72 splices. Trays can be stacked, facilitating the installation process. Recommended splice protector length: up to 45 mm.

The tray is made of high-quality plastic.

TYCON D1-1S-04F FIBER OPTIC SPLICE TRAY [1x4F]

T-D1-1S-04F

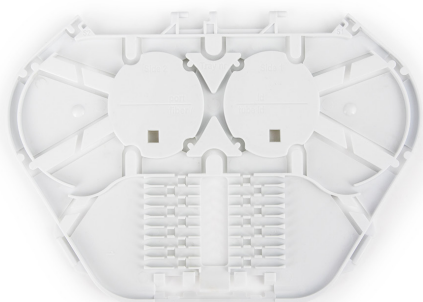


Tycon D1-1S-04F - splice tray designed for organizing optical fibers in fiber optic closures and enclosures. The tray can accommodate up to 4 splices. Trays can be stacked, facilitating the installation process. Recommended splice protector length: up to 45 mm.

The tray is made of high-quality plastic.

TYCON D1-1S-08F FIBER OPTIC SPLICE TRAY [1x8F] SPLITTER

T-D1-1S-08F-PLC



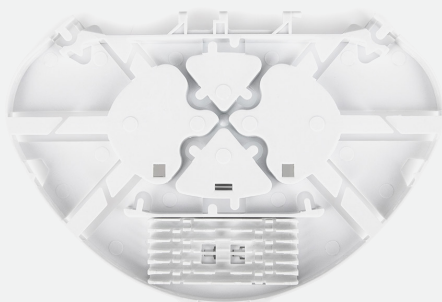
Tycon D1-1S-08F SPLITTER - splice tray designed for organizing optical fibers in fiber optic closures and enclosures. The tray can accommodate up to 4 splices and the installation of a PLC splitter. Trays can be stacked, facilitating the installation process.

Recommended splice protector length: up to 45 mm.

The tray is made of high-quality plastic.

TYCON D1-2S-12F FIBER OPTIC SPLICE TRAY [2x6F]

T-D1-2S-12F

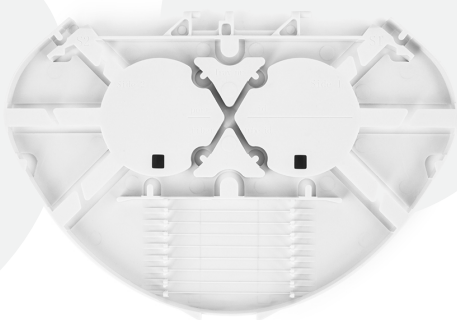


Tycon D1-2S-12F - splice tray designed for organizing optical fibers in fiber optic closures and enclosures. The tray can accommodate up to 12 splices. Trays can be stacked, facilitating the installation process. Recommended splice protector length: up to 45 mm.

The tray is made of high-quality plastic.

TYCON D1-2S-16F FIBER OPTIC SPLICE TRAY [2x8F]

T-D1-2S-16F

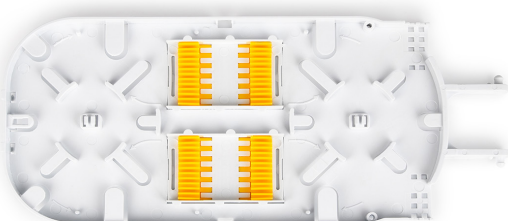


Tycon D1-2S-16F - splice tray designed for organizing optical fibers in fiber optic closures and enclosures. The tray can accommodate up to 16 splices. Trays can be stacked, facilitating the installation process. Recommended splice protector length: up to 45 mm.

The tray is made of high-quality plastic.

TYCON E1-24F FIBER OPTIC SPLICE TRAY [1x24F]

T-E

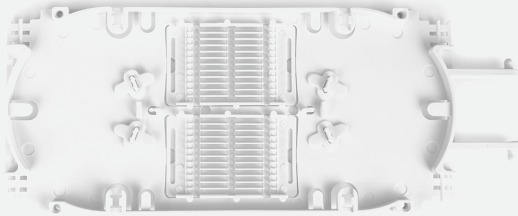


Tycon E1 - splice tray designed for organizing optical fibers in fiber optic closures and enclosures. The tray can accommodate up to 24 splices. Trays can be stacked, facilitating the installation process. Recommended splice protector length: up to 45 mm.

The tray is made of high-quality plastic.

TYCON S1-24F FIBER OPTIC SPLICE TRAY [1x24F]

T-S1

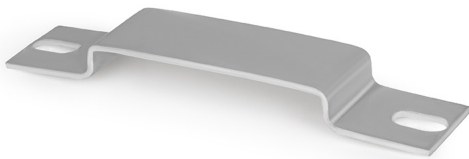


Tycon S1 - splice tray designed for organizing optical fibers in fiber optic closures and enclosures. The tray can accommodate up to 24 splices. Trays can be stacked, facilitating the installation process. Recommended splice protector length: up to 45 mm.

The tray is made of high-quality plastic.

MOUNTING BRACKET FOR TRAY A FOR TYCON 400 B4/B5 CLOSURES

TN-FOSC-400-B4-B5-UM



Bracket for mounting the A1-24F [1x24F] splice tray in Tycon 400 B4 and Tycon 400 B5 fiber optic closures. The bracket allows stable and secure installation of the tray inside the closure, ensuring proper arrangement and protection of fiber optic slack.

Its design facilitates easy mounting and reliable retention of the tray in the designated position, simplifying fiber organization and service access during installation and maintenance. Using the bracket helps keep the interior of the closure organized and increases the overall reliability of the installation.



Fiber optic
cabinets

TYCON

TYCON FTTH POLE-MOUNTED CABINET FOR CLOSURE



The Tycon FTTH pedestal cabinet is designed for outdoor installation by embedding it in the ground to a depth of approximately 60 cm, ensuring stable placement. The design allows convenient mounting of a fiber optic closure, and the thoughtfully organized interior facilitates installation and orderly management of fiber optic cables.

The enclosure is powder-coated in light gray, providing durability and resistance to weather conditions. It features an IP65 sealing rating, effectively protecting the contents from dust and moisture. Access to the interior is secured with two hermetic locks. The kit includes the anchoring screws necessary for installation.



Technical Data

Product name	Product code	Dimensions (W×H×D) [mm]	Weight [kg]	IP protection rating	Mechanical protection class	Material type	Material thickness [mm]
Tycon FTTH pole-mounted cabinet for closure SZS-M-1430/430/230-AL	SLUPEKSZSM143-43-23A	430.0 × 1430.0 × 230.0	11.26	IP65	IK10	Sheet metal	1.5
Tycon FTTH pole-mounted cabinet for closure SZS-M-1430/430/230-SS	SLUPEK-SZSM143-43-23	430.0 × 1430.0 × 230.0	21	IP65	IK10	Stainless steel (201)	1.2

TYCON TOC-32U OUTDOOR RACK CABINET



A freestanding cabinet with a height of 32U, designed for outdoor use. Constructed from 1.5 mm thick 201 stainless steel, providing high strength and resistance to harsh environmental conditions. The cabinet features 20 mm polyurethane insulation and automatic temperature control - if the internal temperature exceeds 35 °C, the air conditioner is activated automatically.

Cabinet equipment:

- Lock with key set
- LED lighting
- Fans
- AC2000 air conditioner
- Equipment shelves - 2 or 4 pcs
- 7-outlet power strip with switch
- External generator plug
- Gasket on the enclosure
- Cable glands at the back - 4 pcs

Technical Data

Product name	Dimensions (HxWxD) [mm]	Insulation [mm]	Fan capacity	LED lighting		Max. shelf load [kg]	Color	Double-walled construction	
Tycon outdoor RACK cabinet TOC-32U-1700/0700/0820 AC2000W SS201	1700 × 700 × 820	20, polyurethane	90m ³ /h x 4 pcs	48V, rated power 3W, 1 pc		80	RAL7047	No	
Tycon outdoor RACK cabinet TOC-32U-1700/1400/0820 AC2000W SS201	1700 × 1400 × 820	20, polyurethane	90m ³ /h x 8 pcs	48V, rated power 3W, 2 pcs		80	RAL7047	No	
Product name	Dimensions (HxWxD) [mm]	Weight [kg]	IP rating	Service life	Rated input power	Rated current (L35/ L35) [A]	Refrigerant	Operating temp. [°C]	Max. noise level [dB]
AC2000 air conditioner	750 × 450 × 200/ 784 × 484 × 200**	28	IP55	>10 years	220 ±15% VAC ~50Hz	3.8	R134a	-40 to 55	65

TYCON TOC-32U OUTDOOR RACK CABINET WITH ETP48200-C5B6 POWER SYSTEM



A freestanding cabinet with a height of 32U, designed for outdoor use. Constructed from 1.5 mm thick 201 stainless steel, providing high strength and resistance to harsh environmental conditions. The cabinet features 20 mm polyurethane insulation and automatic temperature control - if the internal temperature exceeds 35 °C, the air conditioner is activated automatically.

The cabinet is equipped with an ETP48200-C5B6 power supply unit with SMU06T monitoring module.

Cabinet equipment:

- ETP48200-C5B6 power supply unit with SMU06T monitoring module
- Lock with key set
- LED lighting
- Fans
- AC2000 air conditioner
- Equipment shelves - 2 or 4 pcs
- 7-outlet power strip with switch
- External generator plug
- Gasket on the enclosure
- Cable glands at the back - 4 pcs

Technical Data

Product name	Dimensions (HxWxD)[mm]	Insulation [mm]		Fan capacity	LED lighting		Max. nośność półki [kg]	Color	Double-wal- led con- struction
Tycon outdoor RACK cabinet TOC-32U-1700/0700/0820 AC2000W SS201 with ETP48200-C5B6	1700 × 700 × 820	20, polyurethane		90m ³ /h x 4 pcs	48V, rated power 3W, 1 pc		80	RAL7047	No
Tycon outdoor RACK cabinet TOC-32U-1700/1400/0820 AC2000W SS201 with ETP48200-C5B6	1700 × 1400 × 820	20, polyurethane		90m ³ /h x 8 pcs	48V, rated power 3W, 2 pcs		80	RAL7047	No
Product name	Dimensions (HxWxD) [mm]	We- ight [kg]	IP rating	Service life	Rated input power	Rated cur- rent (L35/ L35) [A]	Refrige- rant	Ope- rating temp. [°C]	Max. noise level [dB]
AC2000 air conditioner	750 × 450 × 200/ 784 × 484 × 200**	28	IP55	>10 years	220 ±15% VAC ~50Hz	3.8	R134a	-40 to 55	65

TYCON TOC-42U OUTDOOR RACK CABINET



A freestanding cabinet with a height of 42U, designed for outdoor use. Constructed from 1.5 mm thick 201 stainless steel, providing high strength and resistance to harsh environmental conditions. The cabinet features 20 mm polyurethane insulation and automatic temperature control - if the internal temperature exceeds 35 °C, the air conditioner is activated automatically.

Cabinet equipment:

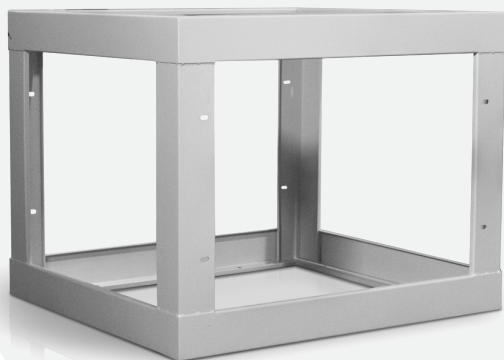
- Lock with key set
- LED lighting
- Fans
- AC2000 air conditioner
- Equipment shelves - 2 or 4 pcs
- 7-outlet power strip with switch
- External generator plug
- Gasket on the enclosure
- Cable glands at the back - 4 pcs

Technical Data

Product name	Dimensions (HxWxD) [mm]	Insulation [mm]		Fan capacity	LED lighting		Max. shelf load [kg]	Color	Double-walled construction
Tycon outdoor RACK cabinet TOC-42U-2180/0700/0820 AC2000W SS201	2180 × 700 × 820	20, polyurethane		90m ³ /h x 4 pcs	48V, rated power 3W, 1 pc		80	RAL7047	No
Tycon outdoor RACK cabinet TOC-42U-2180/1400/0820 AC2000W SS201	2180 × 1400 × 820	20, polyurethane		90m ³ /h x 8 pcs	48V, rated power 3W, 2 pcs		80	RAL7047	No
Product name	Dimensions (HxWxD) [mm]	Weight [kg]	IP rating	Service life	Rated input power	Rated current (L35/L35) [A]	Refrigerant	Operating temperature [°C]	Max. noise level [dB]
AC2000 air conditioner	750 × 450 × 200/ 784 × 484 × 200**	28	IP55	>10 years	220 ±15% VAC ~50Hz	3.8	R134a	-40 to 55	65

PEDESTAL FOR TYCON TOC CABINETS**PED-TOC-0600/0700/0820-SS201**

TOC-POSTUMENT



Pedestal for Tycon TOC cabinets - a reliable solution designed for the stable mounting of telecommunications cabinets. Its construction provides a solid base for installing various electrical components.

Designed for stable and secure installation in outdoor conditions, the pedestal addresses common stability issues, eliminating vibrations and disturbances caused by improper cabinet mounting. Its robust construction allows long-term use without frequent maintenance. For single-door cabinets, one pedestal is sufficient, while double-door cabinets require two pedestals to ensure full structural stability.

Technical Data

Product name	Product code	Height [mm]	Width [mm]	Depth [mm]	Material	Thickness [mm]
Pedestal for Tycon TOC cabinets PED-TOC-0600/0700/0820-SS201	TOC-POSTUMENT	600	700	820	Stainless steel SS201	2



xbest.pl Sp. z o.o.

Headquarters: 00-807 Warszawa, Al. Jerozolimskie 96

Branch: 44-200 Rybnik, ul. Św. Józefa 141D

Phone: +48 32 239 6000, +48 32 239 6001, Fax. +48 32 239 6010

TAX ID: 642-318-10-41, Registry ID: 243085940

www.xbest.pl

e-mail: office@xbest.pl